

# LELIEVRE

PARIS

## ASTRAL - LUNE

4229-02



The influence of the Milky Way and ceramics provided inspiration for this fabric. Between heaven and earth this jacquard visits the elements for a surprising design. A metallic weft yarn creates textural relief on the surface while another shows the motif in a color. Three sophisticated variations for use as curtains, wall panels or accessories.

---

Collection	L'ART ET LA MATIERE
------------	---------------------

---

Brand	LELIEVRE
-------	----------

---

### TECHNICAL DATA

---

Composition	Polyester 68% - Cotton 32%
-------------	----------------------------

---

Width	131 cm
-------	--------

---

Repeat cut	No
------------	----

---

Vertical repeat	47 cm
-----------------	-------

---

Horizontal repeat	65 cm
-------------------	-------


---

Drop match	No
------------	----

---

Care	   
------	---

---

Uses	   
------	---

---

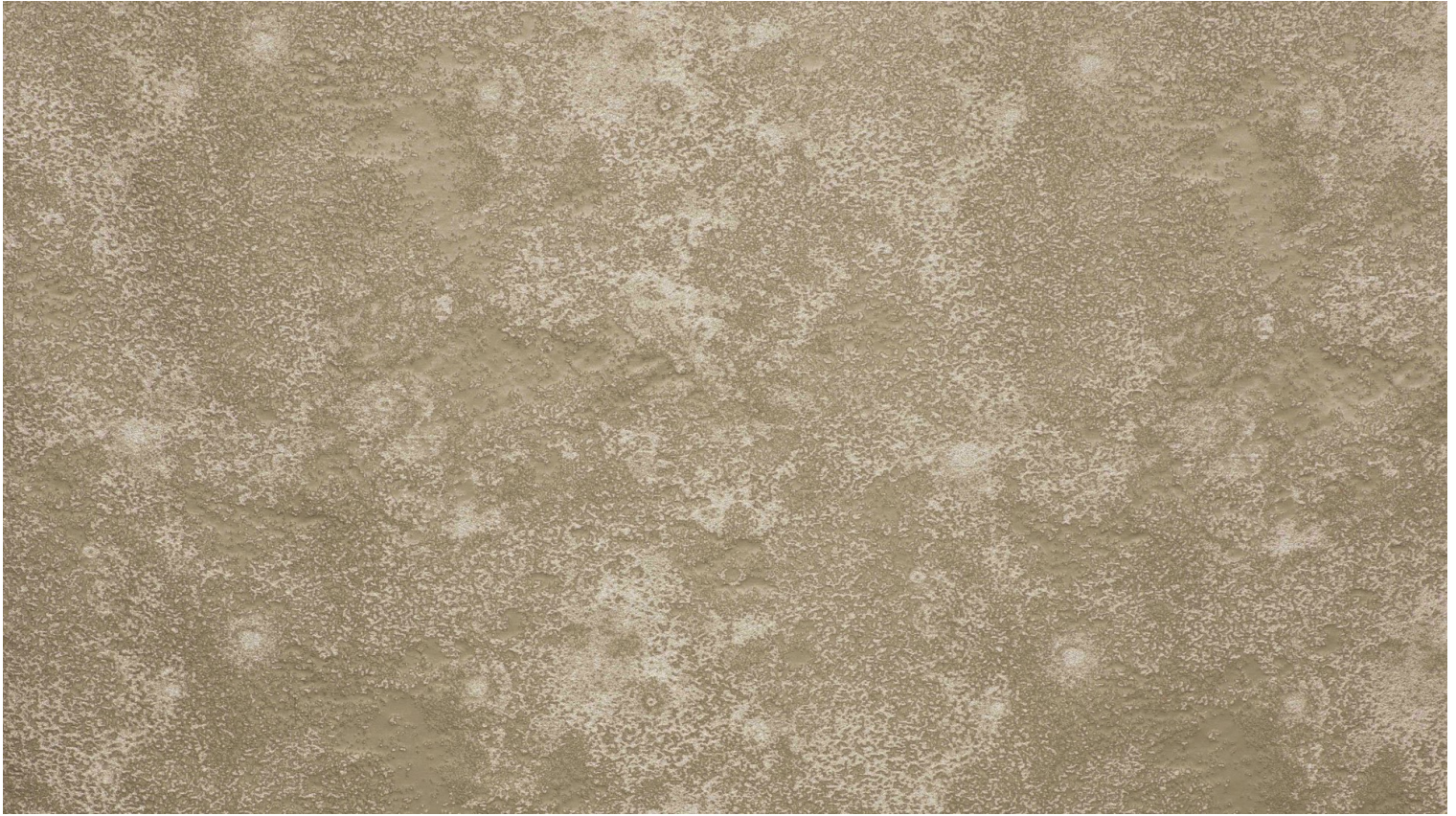
Weight / Linear metre	405 g
-----------------------	-------

---



# LELIEVRE

PARIS



## Available colours



4229-01

**ASTRAL - LICHEN**



4229-02

**ASTRAL - LUNE**



4229-03

**ASTRAL -  
AURORE**



**ASTRAL - LUNE**

4229-02

