

# LELIEVRE

PARIS

## VICTORIA MI - OR

4240-07



Classic and timeless regal in style, this non-flammable damask recreates the delicate generosity of a silk-cotton blend. A generous, vegetal style damask framing a simple medallion harmonious colours from the deep and rich to powdery pastel. Use for curtains, walling and accessories.

Collection **COLLECTION 23**

Brand **QUENIN**

### TECHNICAL DATA

Composition **Polyester TREVIRA CS 100%**

Width **128 cm**

Repeat cut **No**

Vertical repeat **65 cm**

Horizontal repeat **64 cm**

Drop match **No**

Care 

Uses 

Weight / Linear metre **255 g**

Fire rating **MI**

# LELIEVRE

PARIS



[lelievrepairs.com](http://lelievrepairs.com)  
[contact@lelievrepairs.com](mailto:contact@lelievrepairs.com)

# LELIEVRE

PARIS

## Available colours



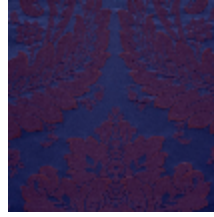
4240-01  
**VICTORIA M1 -  
CELADON**



4240-02  
**VICTORIA M1 -  
OLIVE**



4240-03  
**VICTORIA M1 -  
CANARD**



4240-04  
**VICTORIA M1 -  
PRUNE**



4240-05  
**VICTORIA M1 -  
RUBIS**



4240-06  
**VICTORIA M1 -  
POUDRE**



4240-07  
**VICTORIA M1 - OR**



4240-08  
**VICTORIA M1 -  
ARGENT**



4240-09  
**VICTORIA M1 -  
IVOIRE**



# LELIEVRE

PARIS

## VICTORIA MI - OR

4240-07

