

**VETIVER MI - BERGAMOTE**

4241-03

# LELIEVRE

PARIS



Vetiver. An essence as fine as it is complex, creating the look of vegetation...the brocatelle has a spectacular raised design. The matt, cotton-look warp contrasts against the metallic background like a bas-relief. Vetiver is as deep as the notes of masculine perfume from which it takes its inspiration...and it is expertly woven in our mill in Lyon in the time honoured style. 5 colourways in vibrant shades create a strong look with character, can be used for occasional seating, curtains or wall hangings.

---

Collection	COLLECTION 23
------------	---------------

---

Brand	LELIEVRE CONTRACT
-------	-------------------

---

## TECHNICAL DATA

---

Composition	Polyester TREVIRA CS 100%
-------------	---------------------------

---

Width	138 cm
-------	--------

---

Repeat cut	No
------------	----

---

Vertical repeat	75 cm
-----------------	-------


---

Horizontal repeat	69 cm
-------------------	-------


---

Drop match	No
------------	----

---

Care	   
------	---

---

Uses	   
------	---

---

Martindale test	20 000 T
-----------------	----------

---

Weight / Linear metre	577 g
-----------------------	-------

---

Fire rating	M1
-------------	----

---



# LELIEVRE

PARIS



## Available colours



4241-01  
**VETIVER M1 - IRIS**



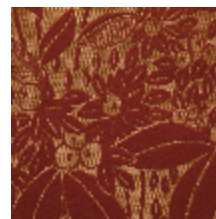
4241-02  
**VETIVER M1 -  
ENCENS**



4241-03  
**VETIVER M1 -  
BERGAMOTE**



4241-04  
**VETIVER M1 -  
JASMIN**



4241-05  
**VETIVER M1 -  
EPICE**



**VETIVER MI - BERGAMOTE**

4241-03

