

LELIEVRE

PARIS

MEDAILLON - CRAMOISI

4243-01



An all-over motif of small chiselled medallions representing a floral motif with a luminous centre.

Collection **FLORILEGE**

Brand **QUENIN**

TECHNICAL DATA

Composition **Polyamide 35% - Linen 32% -
Viscose 32% - Polyester 1%**

Width **130 cm**

Repeat cut **No**

Vertical repeat **4 cm**

Horizontal repeat **2 cm**

Drop match **No**

Care 

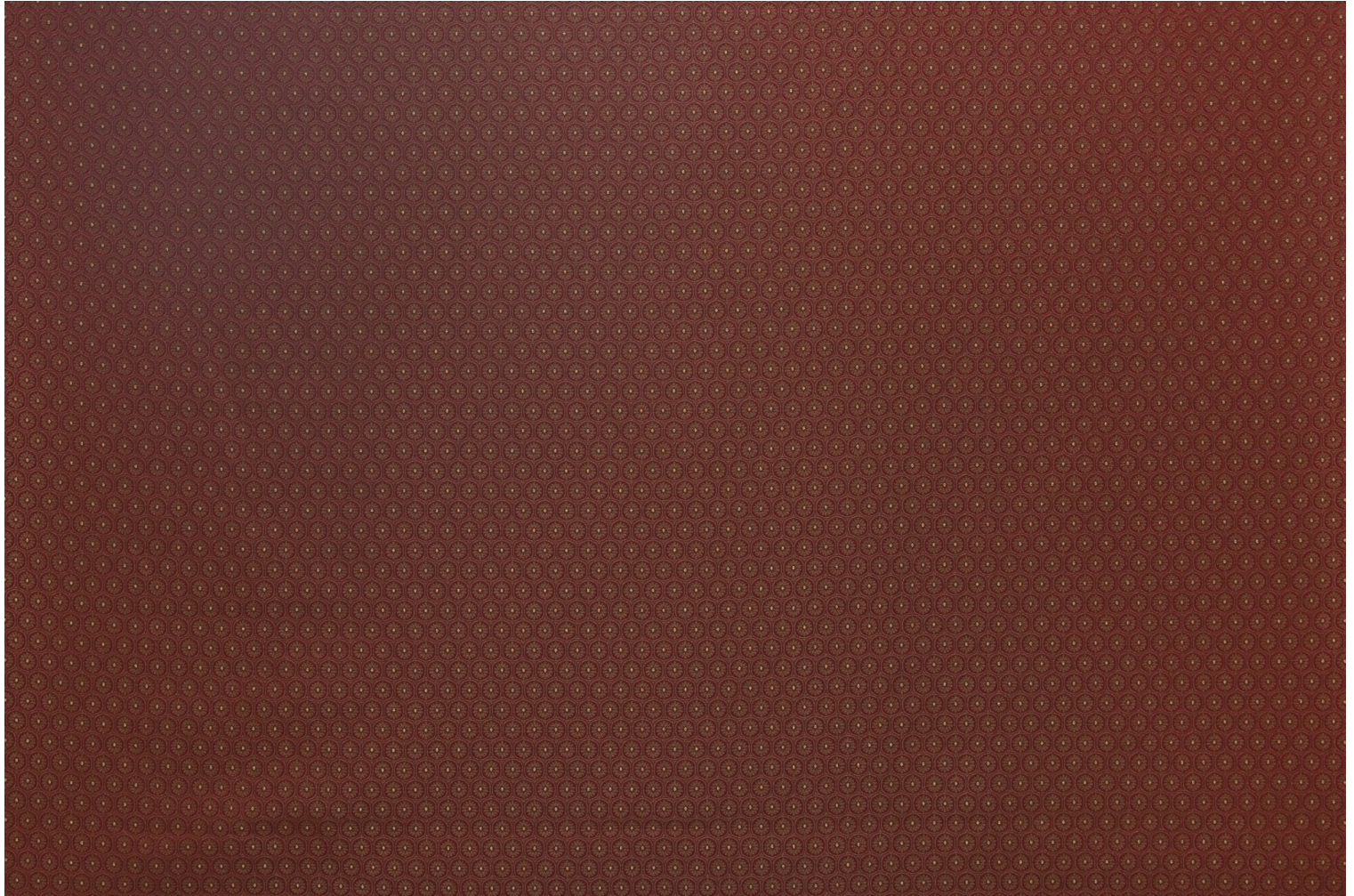
Uses 

Martindale test **40 000 T**

Weight / Linear
metre **400 g**

LELIEVRE

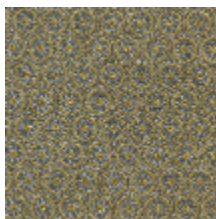
PARIS



Available colours



4243-01
**MEDAILLON -
CRAMOISI**



4243-02
**MEDAILLON -
SCARABEE**



4243-03
**MEDAILLON -
MORDORE**



4243-04
**MEDAILLON -
VERMEIL**



4243-05
**MEDAILLON -
EMAIL**