

LELIEVRE

PARIS

RAMEAUX - VERMEIL

4245-04



A linen background strewn with sprigs of leaves coloured by the warp.

Collection **FLORILEGE**

Brand **QUENIN**

TECHNICAL DATA

Composition **Polyamide 36% - Linen 34% - Cotton 30%**

Width **130 cm**

Repeat cut **No**

Vertical repeat **14 cm**

Horizontal repeat **32 cm**

Drop match **No**

Care 

Uses 

Martindale test **40 000 T**

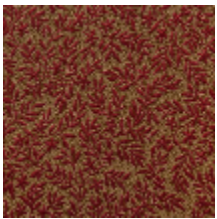
Weight / Linear metre **390 g**

LELIEVRE

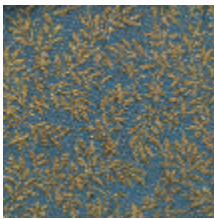
PARIS



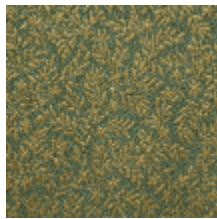
Available colours



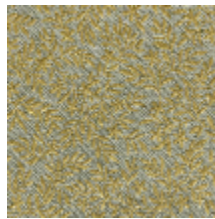
4245-01
**RAMEAUX -
CRAMOISI**



4245-02
**RAMEAUX -
PRUSSE**



4245-03
**RAMEAUX -
AMANDE**



4245-04
**RAMEAUX -
VERMEIL**



4245-05
**RAMEAUX -
NATUREL**