

**DIAMANT M1 - SERAPHINITE**

4248-09



A small triangle, tie design like a faux-uni full of character yet easy to use. Diamant is a contrast of matt and sheen due to its considered construction : a satin warp ground with micro diamonds with a reflective centre like precious stones delicately strewn over a matt thread enhancing the vividness of the colours. Ideal for small upholstered pieces in sophisticated, refined interior. Multiple use.

Collection	CONTRACT 24
------------	-------------

Brand	LELIÈVRE PARIS CONTRACT
-------	-------------------------


## TECHNICAL DATA


Composition	Polyester TREVIRA CS 100%
-------------	---------------------------

Width	137 cm
-------	--------

Repeat cut	No
------------	----

Drop match	No
------------	----

Care	   
------	---

Uses	   
------	---

Martindale test	40 000 T
-----------------	----------

Weight / Linear metre	485 g
-----------------------	-------

Fire rating	M1
-------------	----

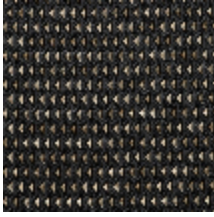
# LELIEVRE

PARIS

## Available colours



4248-01  
**DIAMANT M1 -  
LAPIS**



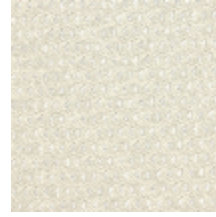
4248-02  
**DIAMANT M1 -  
ONYX**



4248-03  
**DIAMANT M1 -  
GRAPHITE**



4248-04  
**DIAMANT M1 -  
MICA**



4248-05  
**DIAMANT M1 -  
CRISTAL**



4248-06  
**DIAMANT M1 - OR**



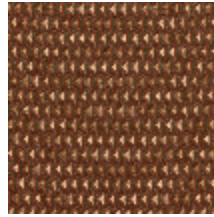
4248-07  
**DIAMANT M1 -  
SOUFRE**



4248-08  
**DIAMANT M1 -  
JADE**



4248-09  
**DIAMANT M1 -  
SERAPHINITE**



4248-10  
**DIAMANT M1 -  
CORNALINE**

**DIAMANT M1 - SERAPHINITE**

4248-09

