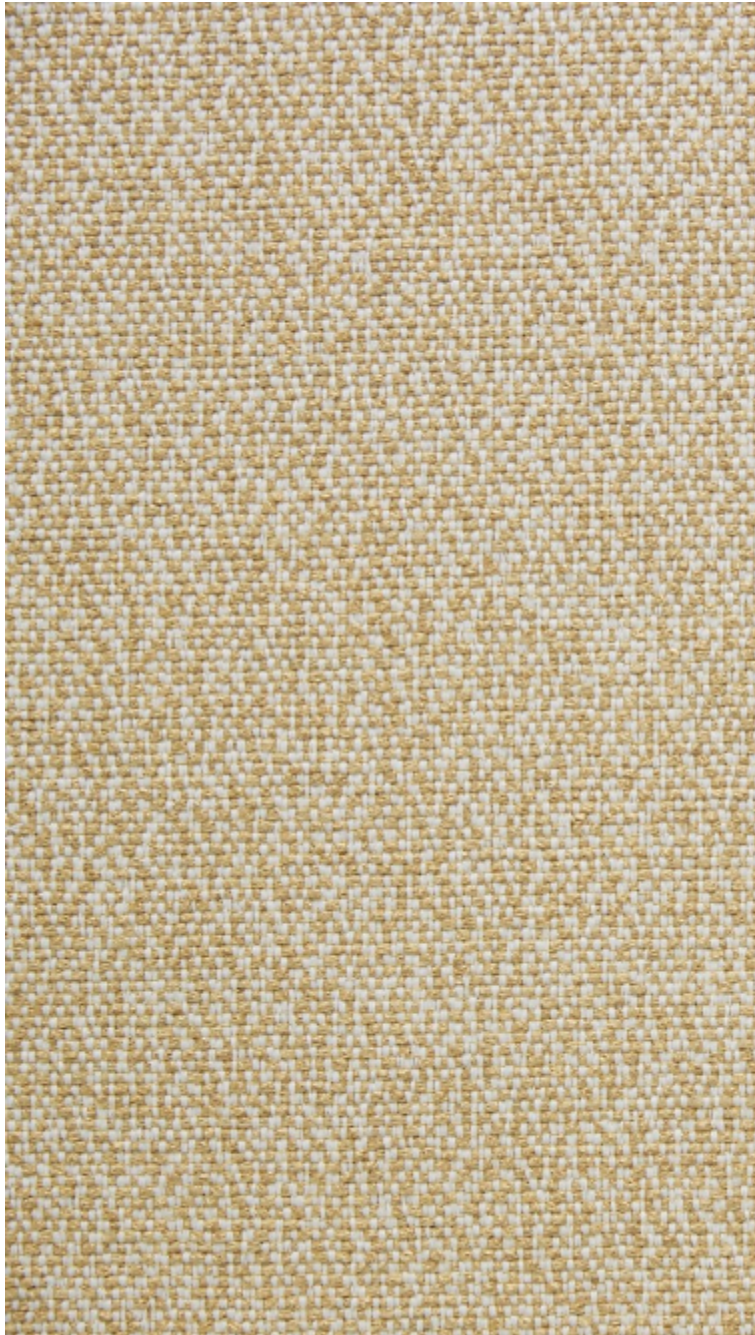


# LELIEVRE

PARIS

## KATMANDOU - GENÊT

4251-03



This structured semi-plain sophisticated weave is inspired by hand-made fabrics from mountain peoples. A palette of 8 colours in plant-based shades topped off with more contrasting colours to give any interior softness and character. This material is both luxurious and natural. Ideal for use on chairs and home accessories.



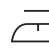





---

Collection	HIMALAYA
Brand	LELIEVRE

---

### TECHNICAL DATA

---

Composition	Viscose 61% - Cotton 31% - Linen 5% - Polyester 2% - Polyamide 1%
Width	136 cm
Repeat cut	No
Drop match	No
Care	   
Uses	   
Martindale test	40 000 T
Weight / Linear metre	900 g

---

# LELIEVRE

PARIS

## Available colours



4251-01  
**KATMANDOU -  
GRANIT**



4251-02  
**KATMANDOU -  
EUCALYPTUS**



4251-03  
**KATMANDOU -  
GENÊT**



4251-04  
**KATMANDOU -  
NATUREL**



4251-05  
**KATMANDOU -  
FICELLE**



4251-06  
**KATMANDOU -  
TOMETTE**



4251-07  
**KATMANDOU -  
LIEGE**



4251-08  
**KATMANDOU -  
AUBERGINE**

**KATMANDOU - GENÊT**  
4251-03

