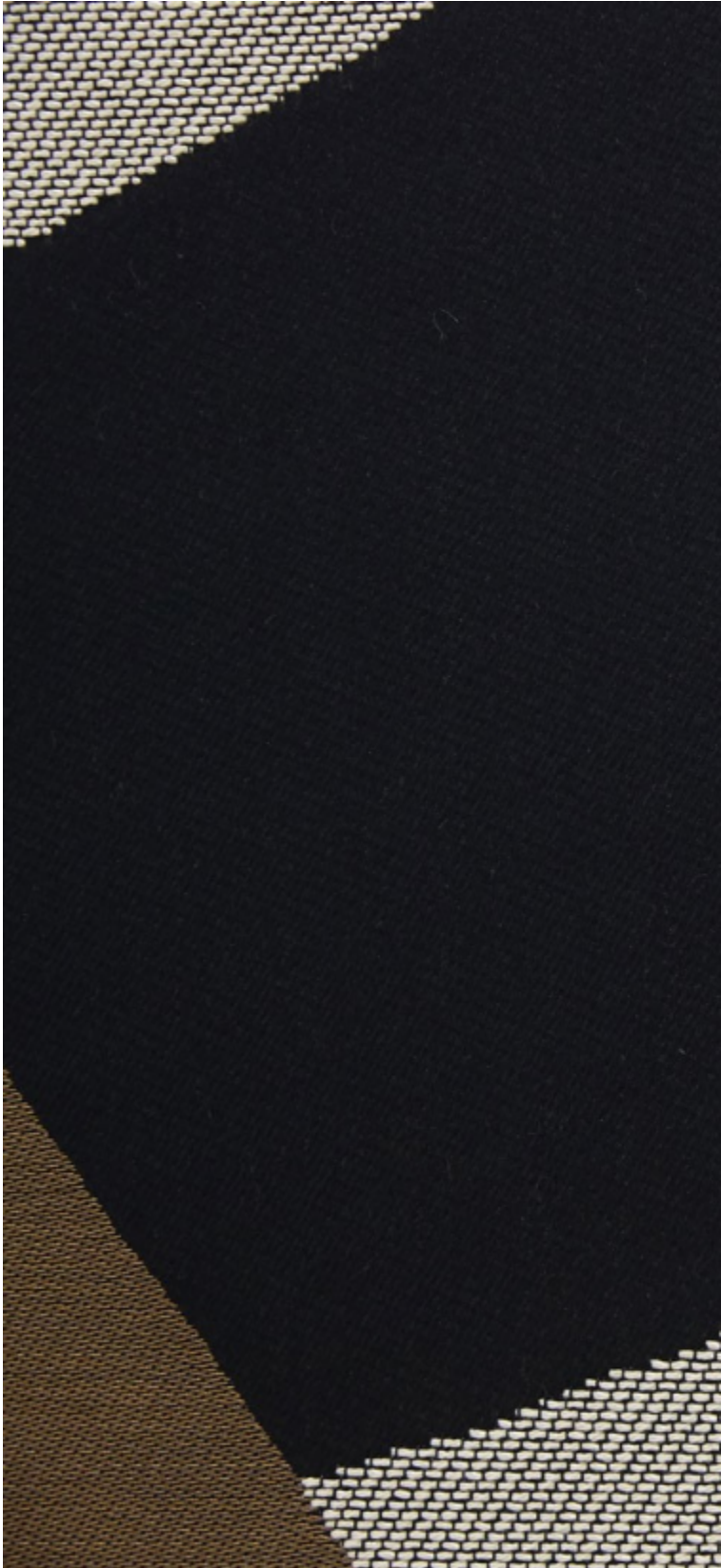


**DALAI - ECAILLE**

4252-01

# LELIEVRE

PARIS



This design is symbolic of the collection and has been developed and woven in France in our workshops. This big lampas composed of geometric shapes reinterprets the traditional headdresses of Tibetan monks. The weave accentuates the contrasts in the pattern for graphic and contemporary home accessories. It is available in 3 colourways, from classic to bolder shades, for use in upholstery, curtains and home accessories.

---

Collection	HIMALAYA
------------	----------

---

Brand	LELIEVRE PARIS
-------	----------------

---

## TECHNICAL DATA

---

Type	Damasks & Lampas
------	------------------

---

Composition	Cotton 68% - Viscose 18% - Polyester 14%
-------------	--

---

Width	139 cm
-------	--------

---

Repeat cut	No
------------	----

---

Vertical repeat	75 cm
-----------------	-------

---

Horizontal repeat	70 cm
-------------------	-------

---

Half drop match	No
-----------------	----

---

Care	  
------	---

---

Uses	   
------	---

---

Martindale test	20 000 T
-----------------	----------

---

Weight / Linear metre	730 g
-----------------------	-------

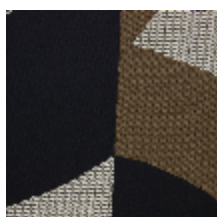
---

# LELIEVRE

PARIS



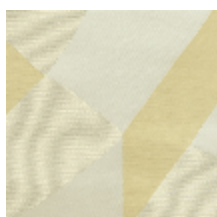
## Available colours



4252-01  
**DALAI - ECAILLE**



4252-02  
**DALAI - SOLEIL**



4252-03  
**DALAI - NATUREL**



**DALAI - ECAILLE**

4252-01

