

**ECAILLE DE CHINE - OLIVE**

4254-02



This little dual-tone motif evokes a bird's plumage and coordinates perfectly with the "La Parade des oiseaux" fabric. The dullness of the warp thread chimes in with the slight shine of the weft, giving the fabric relief and elegance. A Chinese tortoiseshell woven in our workshops in France and available in 9 intense and sparkling colourful shades.

Collection	FLORILEGE
------------	-----------

Brand	QUENIN
-------	--------

## TECHNICAL DATA

Composition	Cotton 35% - Linen 34% - Viscose 20% - Polyamide 11%
-------------	---

Width	142 cm
-------	--------

Repeat cut	No
------------	----

Vertical repeat	8 cm
-----------------	------

Horizontal repeat	6 cm
-------------------	------

Drop match	No
------------	----

Care	   
------	---

Uses	   
------	---

Martindale test	40 000 T
-----------------	----------

Weight / Linear metre	465 g
-----------------------	-------



LELIEVRE

PARIS



[lelievreparis.com](http://lelievreparis.com)  
[contact@lelievreparis.com](mailto:contact@lelievreparis.com)

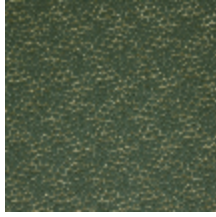
# LELIEVRE

PARIS

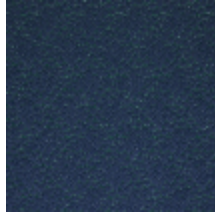
## Available colours



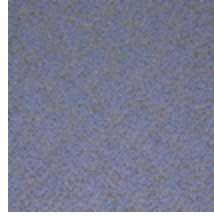
4254-01  
**ECAILLE DE CHINE**  
- CELADON



4254-02  
**ECAILLE DE CHINE**  
- OLIVE



4254-03  
**ECAILLE DE CHINE**  
- PAON



4254-04  
**ECAILLE DE CHINE**  
- BLEUET



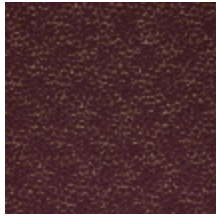
4254-05  
**ECAILLE DE CHINE**  
- ARGENT



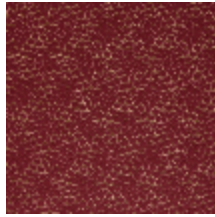
4254-06  
**ECAILLE DE CHINE**  
- VERMEIL



4254-07  
**ECAILLE DE CHINE**  
- PEPITE



4254-08  
**ECAILLE DE CHINE**  
- BURGUNDY



4254-09  
**ECAILLE DE CHINE**  
- RUBIS



**ECAILLE DE CHINE - OLIVE**

4254-02

