

ECAILLE DE CHINE - VERMEIL

4254-06



This little dual-tone motif evokes a bird's plumage and coordinates perfectly with the "La Parade des oiseaux" fabric. The dullness of the warp thread chimes in with the slight shine of the weft, giving the fabric relief and elegance. A Chinese tortoiseshell woven in our workshops in France and available in 9 intense and sparkling colourful shades.

| | |
|------------|-----------|
| Collection | FLORILEGE |
|------------|-----------|

| | |
|-------|--------|
| Brand | QUENIN |
|-------|--------|

TECHNICAL DATA

| | |
|-------------|---|
| Composition | Cotton 35% - Linen 34% - Viscose 20% - Polyamide 11% |
|-------------|---|

| | |
|-------|--------|
| Width | 142 cm |
|-------|--------|

| | |
|------------|----|
| Repeat cut | No |
|------------|----|

| | |
|-----------------|------|
| Vertical repeat | 8 cm |
|-----------------|------|

| | |
|-------------------|------|
| Horizontal repeat | 6 cm |
|-------------------|------|

| | |
|------------|----|
| Drop match | No |
|------------|----|

| | |
|------|---|
| Care |     |
|------|---|

| | |
|------|---|
| Uses |     |
|------|---|

| | |
|-----------------|----------|
| Martindale test | 40 000 T |
|-----------------|----------|

| | |
|-----------------------|-------|
| Weight / Linear metre | 465 g |
|-----------------------|-------|

LELIEVRE

PARIS



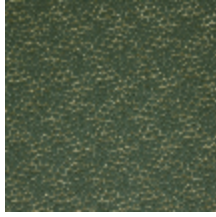
LELIEVRE

PARIS

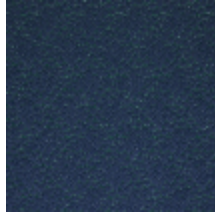
Available colours



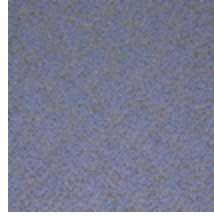
4254-01
ECAILLE DE CHINE
- CELADON



4254-02
ECAILLE DE CHINE
- OLIVE



4254-03
ECAILLE DE CHINE
- PAON



4254-04
ECAILLE DE CHINE
- BLEUËT



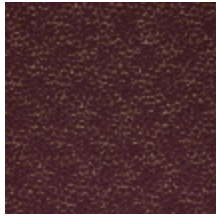
4254-05
ECAILLE DE CHINE
- ARGENT



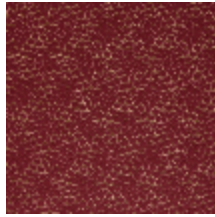
4254-06
ECAILLE DE CHINE
- VERMEIL



4254-07
ECAILLE DE CHINE
- PÈPÌTE



4254-08
ECAILLE DE CHINE
- BURGUNDY



4254-09
ECAILLE DE CHINE
- RUBIS

ECAILLE DE CHINE - VERMEIL

4254-06

