

ARIANE MI - CHOCOLAT

4256-06



A gorgeous geometric pattern consisting of diamonds accented with stripes in three colours over a slightly satiny background, creating a rhythmic contrast with textured lines emphasised by a darker underline for a shadow effect. ARIANE is available in a palette of alluring colours to create singular interiors coordinated with HERA.

Collection	CONTRACT 25
------------	-------------

Brand	LELIEVRE PARIS CONTRACT
-------	-------------------------

TECHNICAL DATA

Composition	Polyester TREVIRACS 54% - Polyester FR 46%
-------------	---

Width	138 cm
-------	--------


Repeat cut	No
------------	----

Vertical repeat	22 cm
-----------------	-------

Horizontal repeat	14 cm
-------------------	-------

Drop match	No
------------	----

Care	   
------	---

Uses	   
------	---

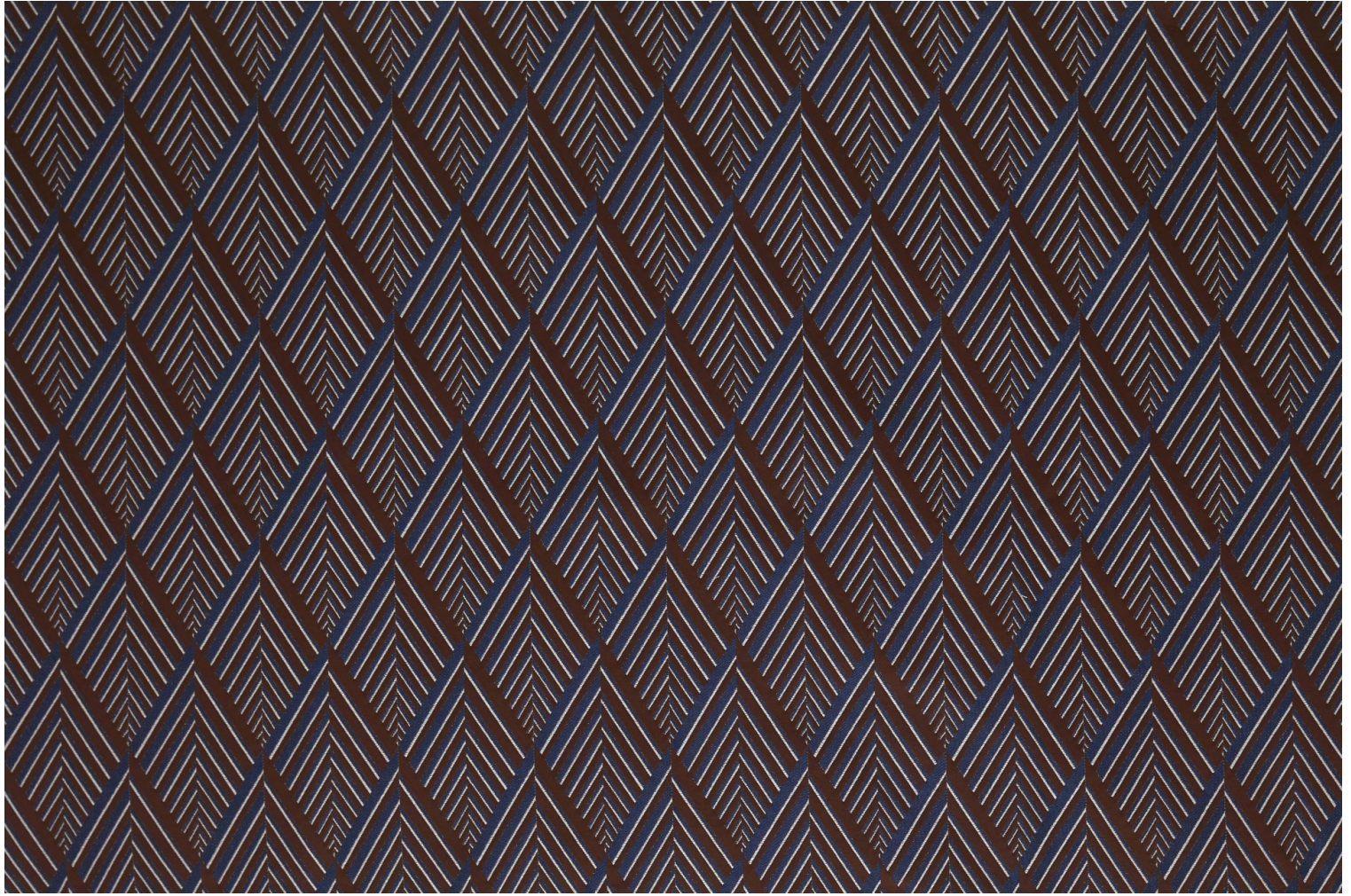
Martindale test	50 000 T
-----------------	----------

Weight / Linear metre	600 g
-----------------------	-------

Fire rating	MI
-------------	----

LELIEVRE

PARIS



lelievreparis.com
contact@lelievreparis.com

LELIEVRE

PARIS

Available colours



4256-01
**ARIANE M1 -
BLANC**



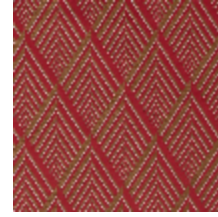
4256-02
**ARIANE M1 -
NATUREL**



4256-03
**ARIANE M1 -
ABSINTHE**



4256-04
**ARIANE M1 -
GAZELLE**



4256-05
**ARIANE M1 -
PAVOT**



4256-06
**ARIANE M1 -
CHOCOLAT**



4256-07
**ARIANE M1 -
MENTHE**

ARIANE MI - CHOCOLAT

4256-06

