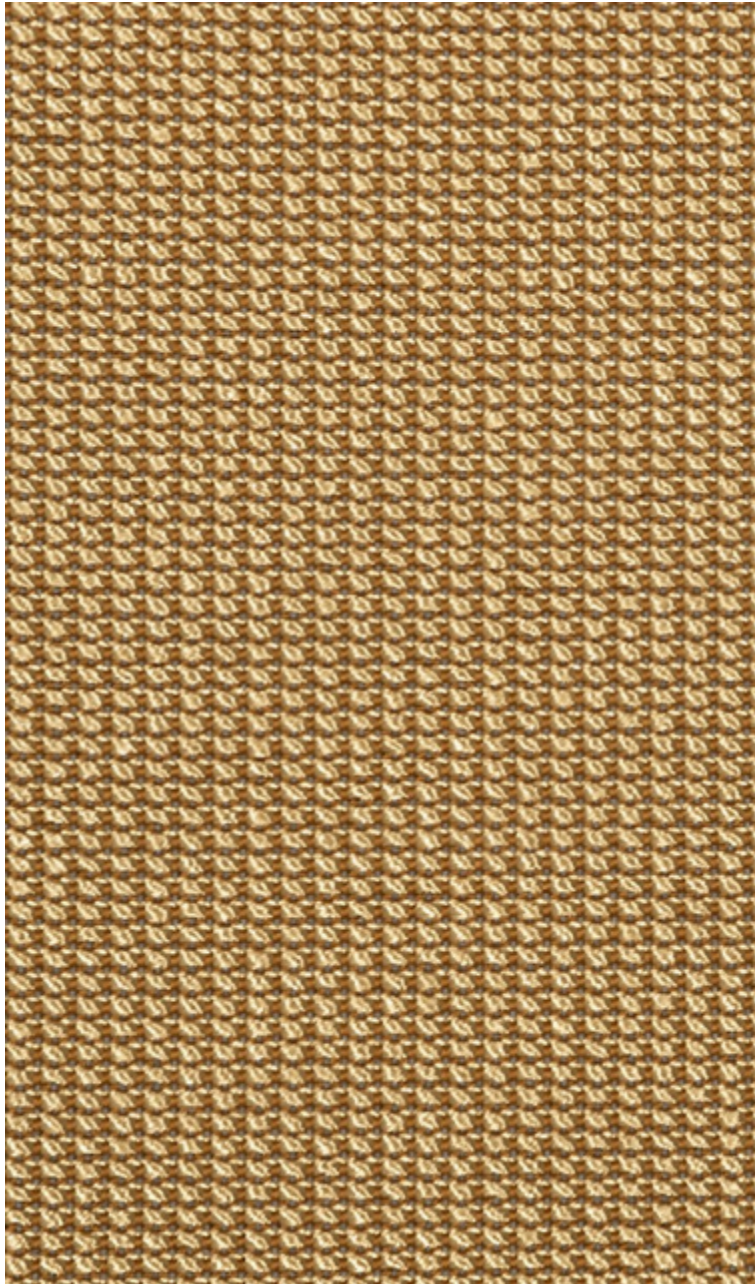


# LELIEVRE

PARIS

## PLATINE M1 - DORE

4257-05



A faux plain metallic weave with a 3D effect, PLATINE has the confident and elaborate radiance of chain mail. It consists of a palette of very soft halftones, accented by a contrasting yarn that creates a visual balance to perfectly complement the Numero 25 collection.

---

Collection	CONTRACT 25
------------	-------------

---

Brand	LELIEVRE CONTRACT
-------	-------------------

---

### TECHNICAL DATA

---

Composition	Polyester FR 100%
-------------	-------------------

---

Width	138 cm
-------	--------

---

Repeat cut	No
------------	----

---

Drop match	No
------------	----

---

Care	   
------	---

---

Uses	   
------	---

---

Martindale test	50 000 T
-----------------	----------

---

Weight / Linear metre	700 g
-----------------------	-------

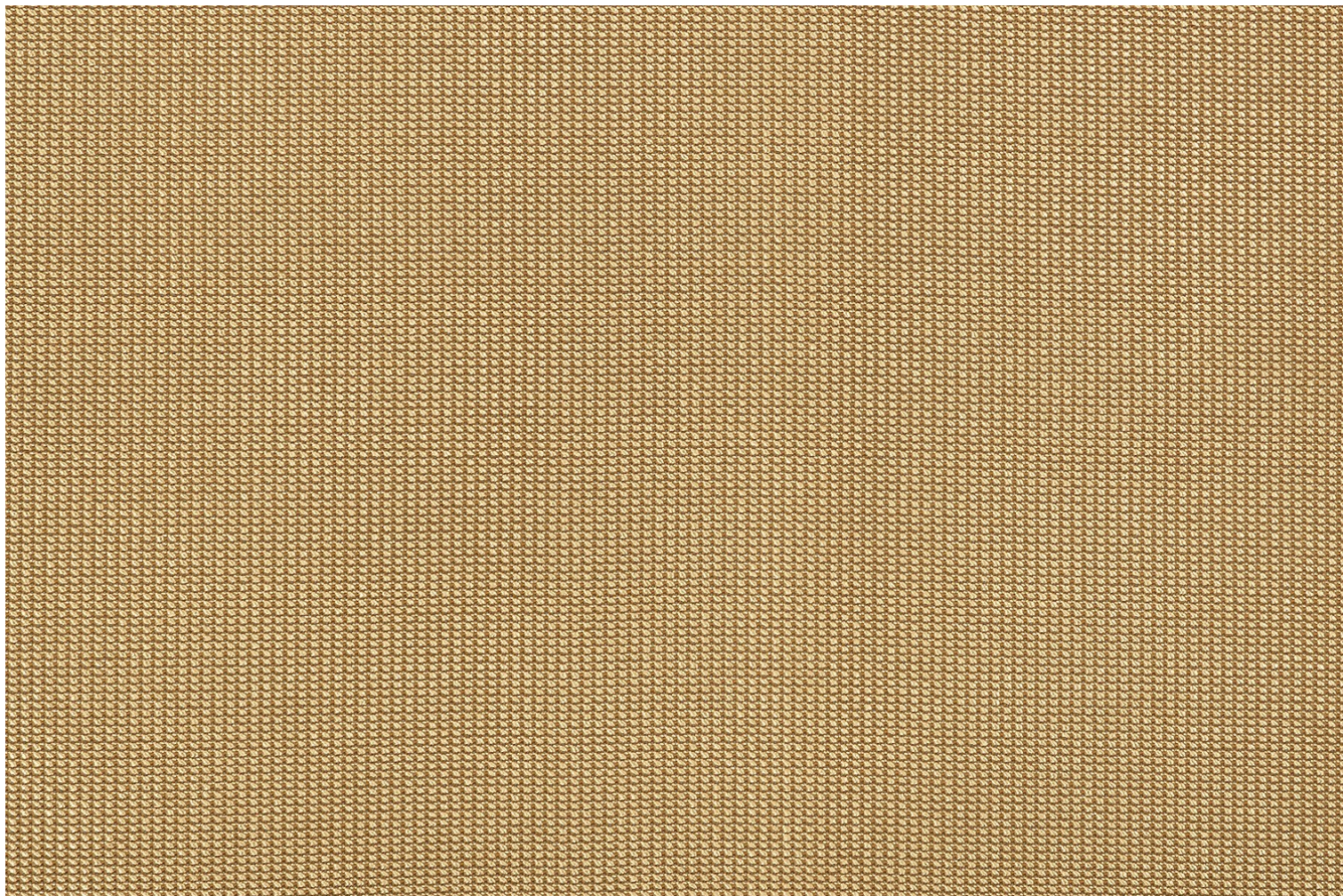
---

Fire rating	M1
-------------	----

---

# LELIEVRE

PARIS



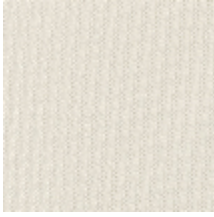
# LELIEVRE

PARIS

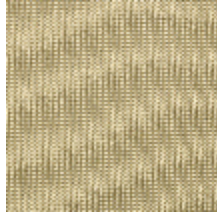
## Available colours



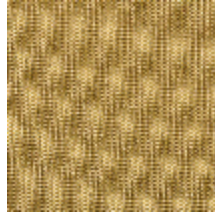
4257-01  
**PLATINE M1 -  
TITANE**



4257-02  
**PLATINE M1 -  
NACRE**



4257-03  
**PLATINE M1 -  
VERMEIL**



4257-04  
**PLATINE M1 - OR**



4257-05  
**PLATINE M1 -  
DORE**



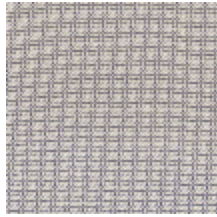
4257-06  
**PLATINE M1 -  
MORDORE**



4257-07  
**PLATINE M1 -  
CUIVRE**



4257-08  
**PLATINE M1 -  
BRONZE**



4257-09  
**PLATINE M1 -  
PALLADIUM**



4257-10  
**PLATINE M1 -  
ZINC**

**PLATINE M1 - DORE**

4257-05

