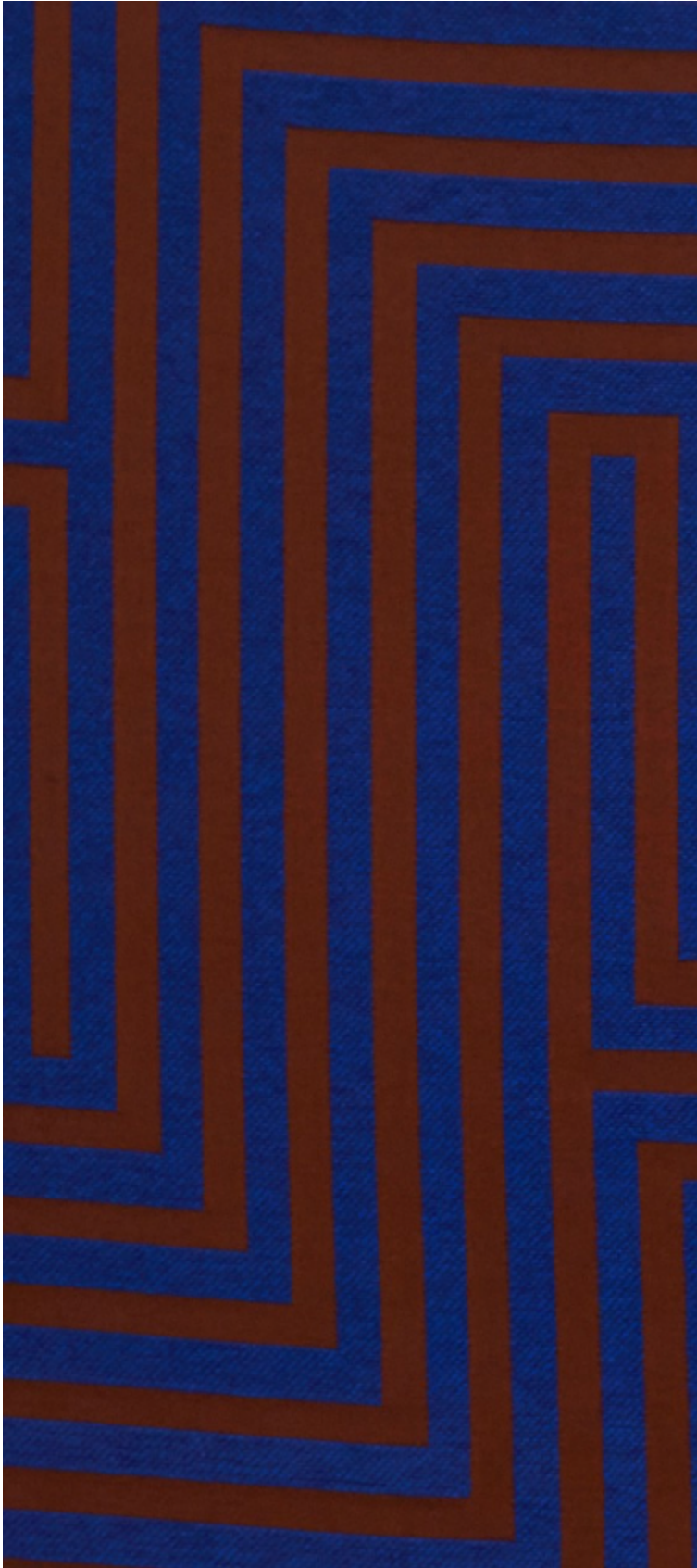


**HERA M1 - LAPIS**

4258-06

# LELIEVRE

PARIS



Featuring a large and structured two-colour geometric pattern, representing a maze and boasting a satiny matt finish that creates a play of light, HERA incorporates a deeply embossed texture giving it a slightly swollen aspect. The fabric drapes spectacularly well and has a wonderfully natural feel achieved thanks to a technical feat developed at Lelièvre's mill. Its bold palette of colours provides the possibility for strong, daring compositions. It is truly the masterpiece of the Numero 25 collection.

---

Collection	CONTRACT 25
------------	-------------

---

Brand	LELIÈVRE PARIS CONTRACT
-------	-------------------------

---

## TECHNICAL DATA

---

Composition	Polyester TREVIRACS 79% - PESFR 21%
-------------	--

---

Width	141 cm
-------	--------

---

Repeat cut	No
------------	----

---

Vertical repeat	76 cm
-----------------	-------

---

Horizontal repeat	71 cm
-------------------	-------

---

Drop match	No
------------	----

---

Care	   
------	---

---

Uses	   
------	---

---

Martindale test	50 000 T
-----------------	----------

---

Weight / Linear metre	890 g
-----------------------	-------

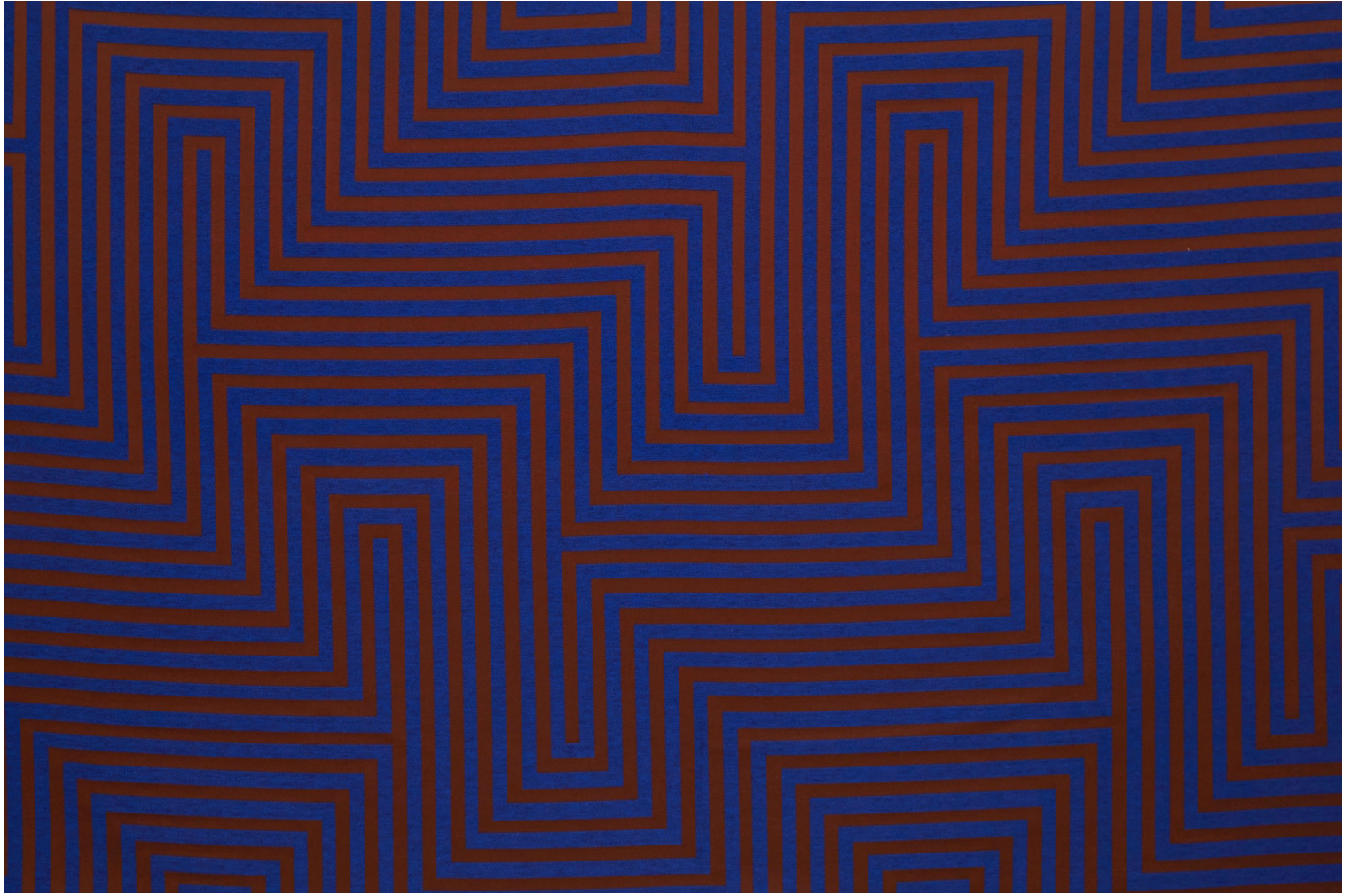
---

Fire rating	MI
-------------	----

---

LELIEVRE

PARIS



[lelievrepairs.com](http://lelievrepairs.com)  
[contact@lelievrepairs.com](mailto:contact@lelievrepairs.com)

# LELIEVRE

PARIS

## Available colours



4258-01  
**HERA M1 - BLANC**



4258-02  
**HERA M1 -  
NATUREL**



4258-03  
**HERA M1 -  
ABSINTHE**



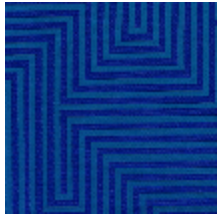
4258-04  
**HERA M1 - PAVOT**



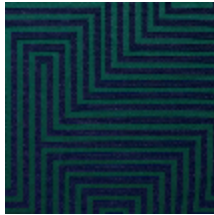
4258-05  
**HERA M1 - BOIS  
DE ROSE**



4258-06  
**HERA M1 - LAPIS**



4258-07  
**HERA M1 -  
OUTREMER**



4258-08  
**HERA M1 - FORET**

**HERA M1 - LAPIS**

4258-06

