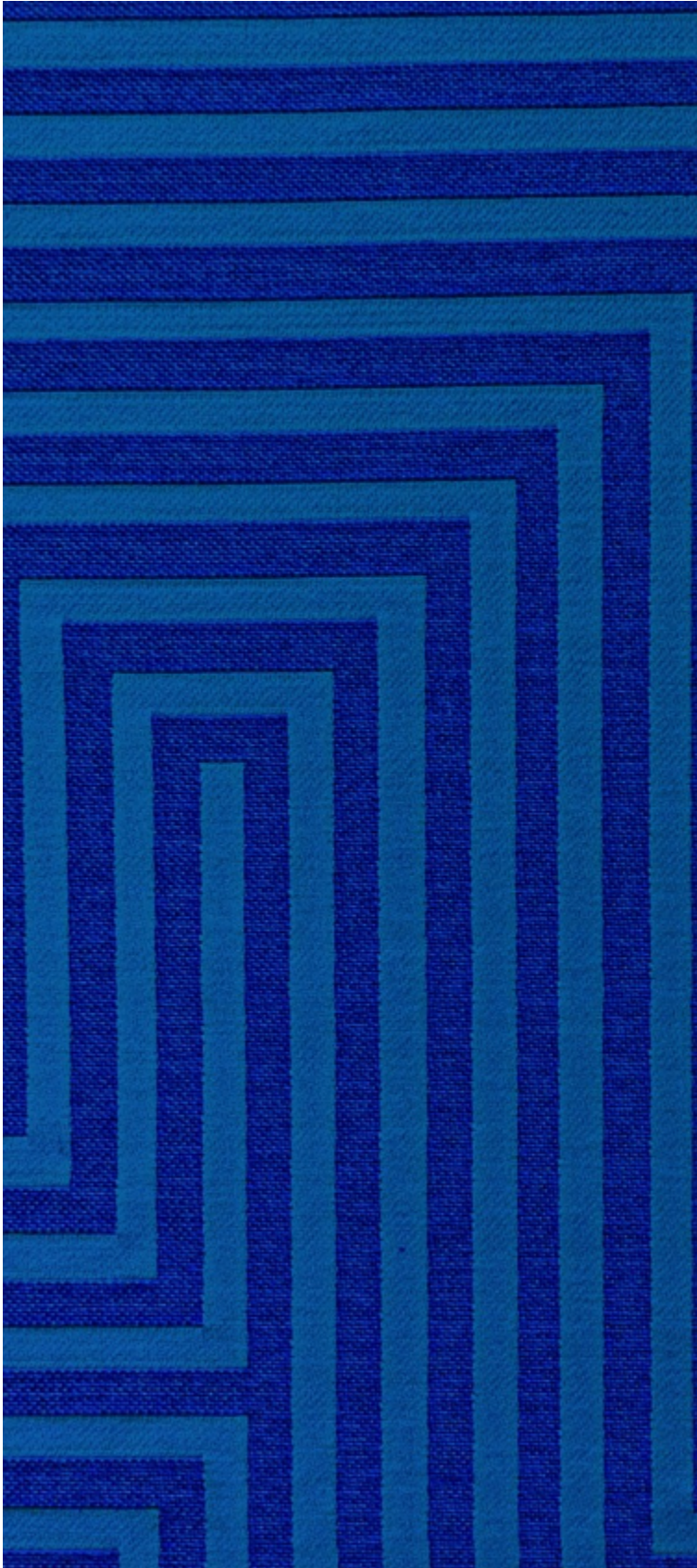


HERA M1 - OUTREMER

4258-07

LELIEVRE

PARIS



Featuring a large and structured two-colour geometric pattern, representing a maze and boasting a satiny matt finish that creates a play of light, HERA incorporates a deeply embossed texture giving it a slightly swollen aspect. The fabric drapes spectacularly well and has a wonderfully natural feel achieved thanks to a technical feat developed at Lelièvre's mill. Its bold palette of colours provides the possibility for strong, daring compositions. It is truly the masterpiece of the Numero 25 collection.

Collection	CONTRACT 25
------------	-------------

Brand	LELIÈVRE PARIS CONTRACT
-------	-------------------------

TECHNICAL DATA

Composition	Polyester TREVIRACS 79% - PESFR 21%
-------------	--

Width	141 cm
-------	--------

Repeat cut	No
------------	----

Vertical repeat	76 cm
-----------------	-------

Horizontal repeat	71 cm
-------------------	-------

Drop match	No
------------	----

Care	   
------	---

Uses	   
------	---

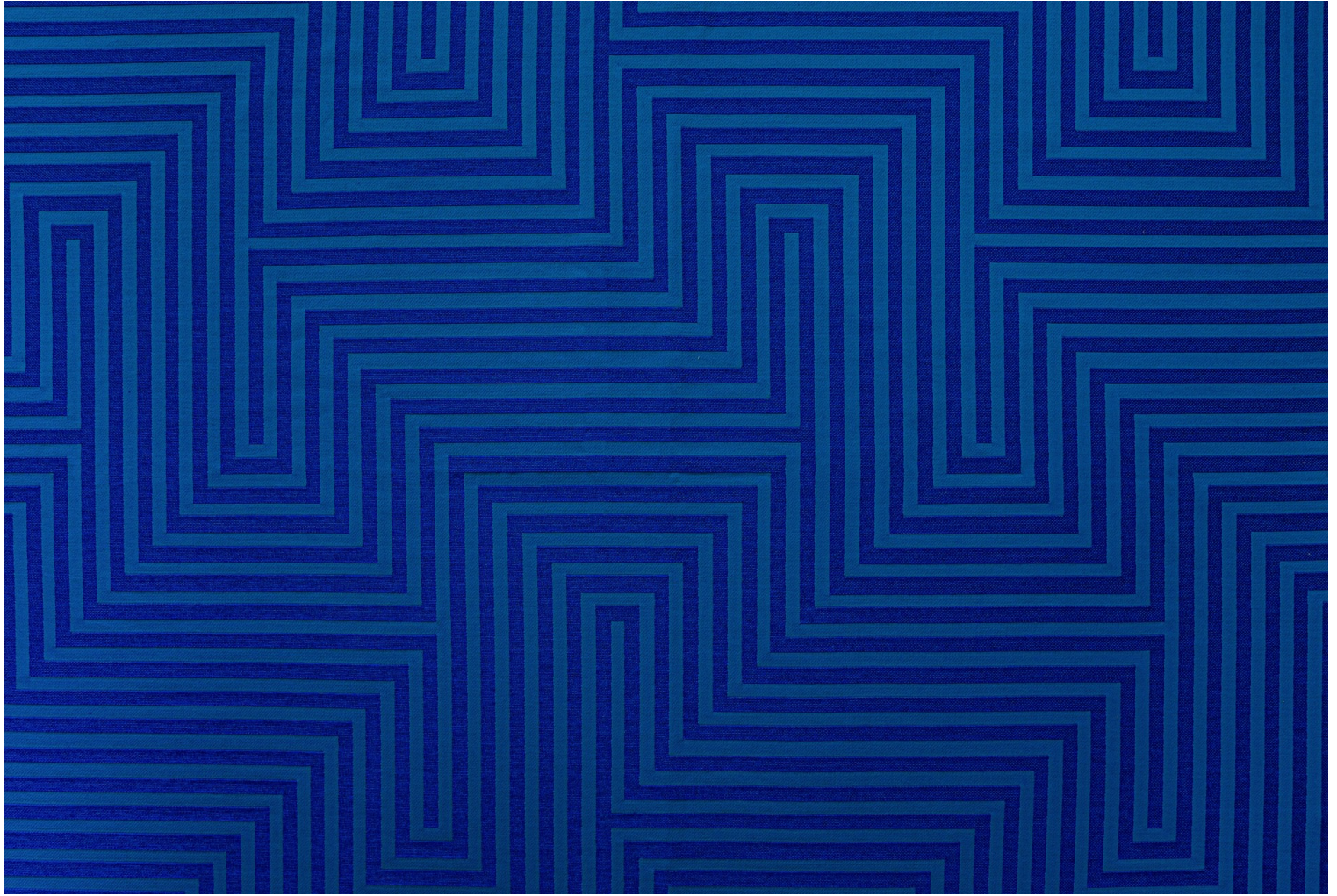
Martindale test	50 000 T
-----------------	----------

Weight / Linear metre	890 g
-----------------------	-------

Fire rating	MI
-------------	----

LELIEVRE

PARIS



lelievrepairs.com
contact@lelievrepairs.com

LELIEVRE

PARIS

Available colours



4258-01
HERA M1 - BLANC



4258-02
**HERA M1 -
NATUREL**



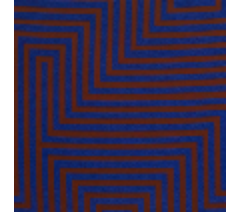
4258-03
**HERA M1 -
ABSINTHE**



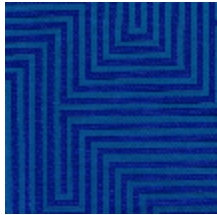
4258-04
HERA M1 - PAVOT



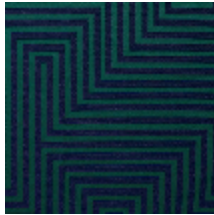
4258-05
**HERA M1 - BOIS
DE ROSE**



4258-06
HERA M1 - LAPIS



4258-07
**HERA M1 -
OUTREMER**



4258-08
HERA M1 - FORET

HERA M1 - OUTREMER

4258-07

