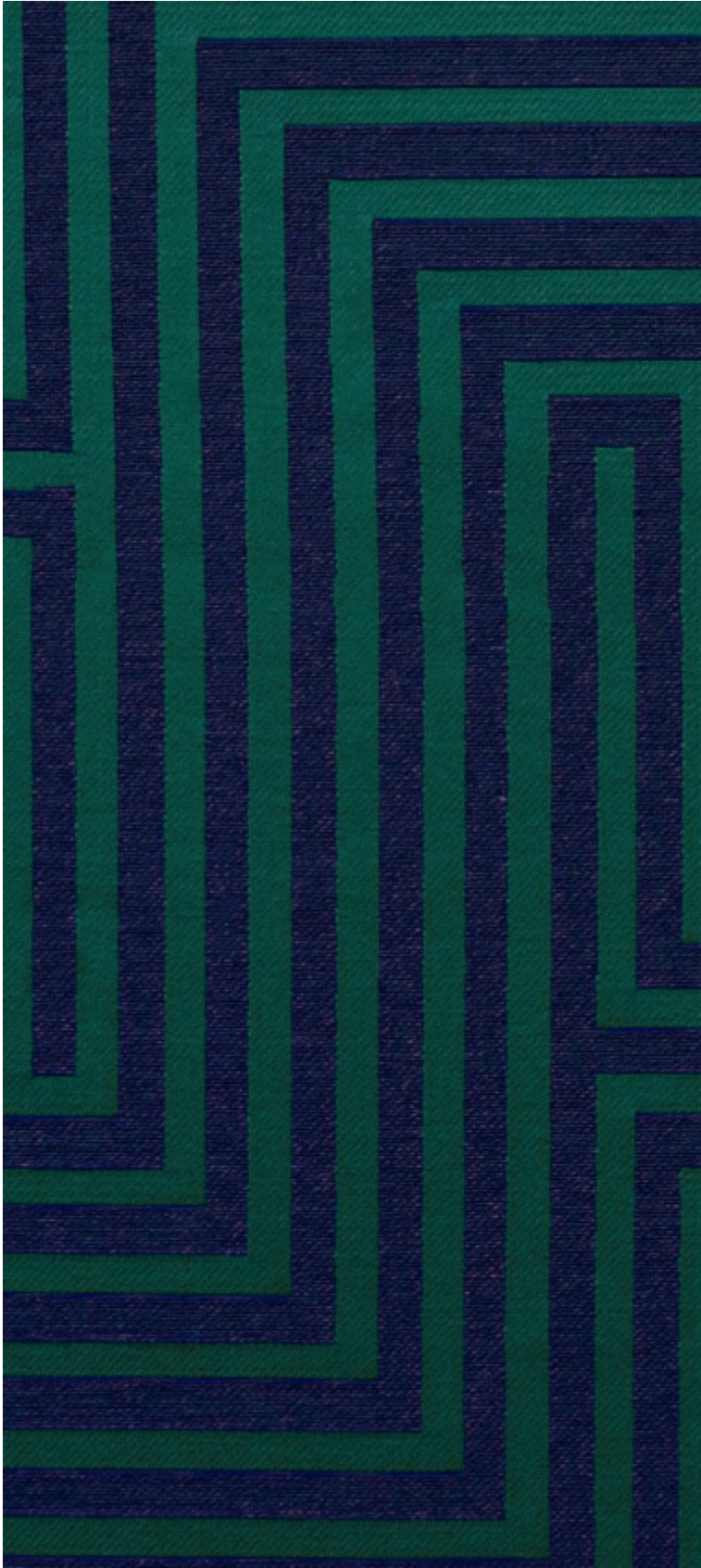


**HERA - FORET**

4258-08

# LELIEVRE

PARIS



Featuring a large and structured two-colour geometric pattern, representing a maze and boasting a satiny matt finish that creates a play of light, HERA incorporates a deeply embossed texture giving it a slightly swollen aspect. The fabric drapes spectacularly well and has a wonderfully natural feel achieved thanks to a technical feat developed at Lelièvre's mill. Its bold palette of colours provides the possibility for strong, daring compositions. It is truly the masterpiece of the Numero 25 collection.

---

Collection	CONTRACT 25
------------	-------------

---

Brand	LELIÈVRE PARIS CONTRACT
-------	-------------------------

---

## TECHNICAL DATA

---

Type	Jacquard
------	----------

---

Composition	Polyester TREVIRACS 79% - PESFR 21%
-------------	--

---

Width	141 cm
-------	--------

---

Repeat cut	No
------------	----

---

Vertical repeat	76 cm
-----------------	-------

---

Horizontal repeat	71 cm
-------------------	-------


---

Half drop match	No
-----------------	----

---

Care	  
------	---

---

Uses	   
------	---

---

Martindale test	50 000 T
-----------------	----------

---

Weight / Linear metre	890 g
-----------------------	-------

---

# LELIEVRE

PARIS

---

Fire rating

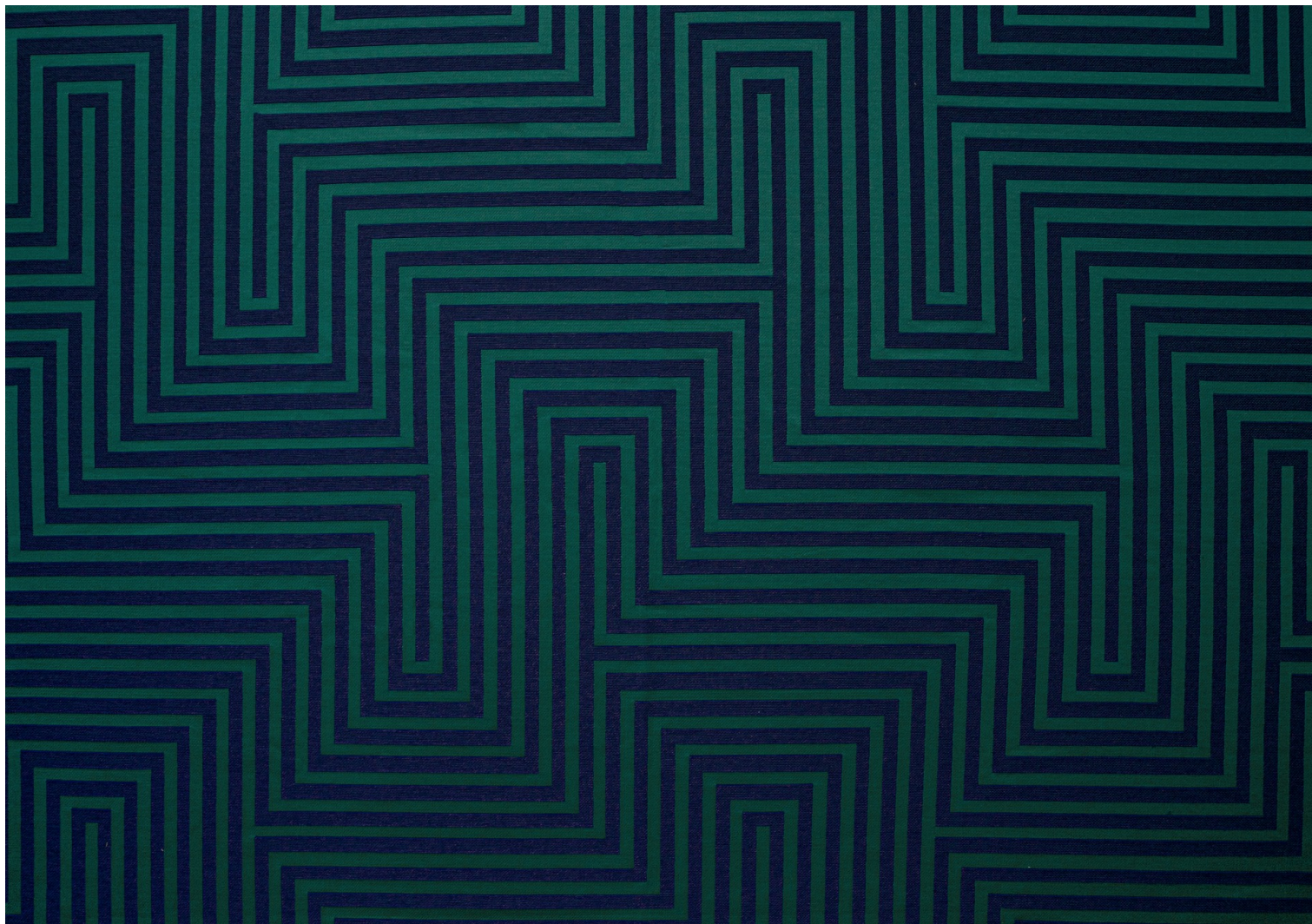
M1

---



LELIEVRE

PARIS



[lelievrepairs.com](http://lelievrepairs.com)  
[contact@lelievrepairs.com](mailto:contact@lelievrepairs.com)

# LELIEVRE

PARIS

## Available colours



4258-01

**HERA - BLANC**



4258-02

**HERA - NATUREL**



4258-03

**HERA - ABSINTHE**



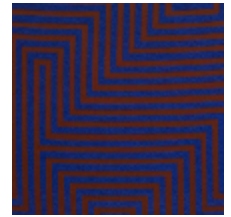
4258-04

**HERA - PAVOT**



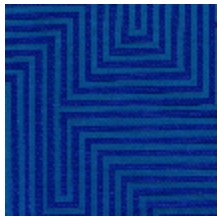
4258-05

**HERA - BOIS DE  
ROSE**



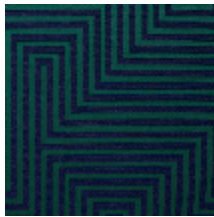
4258-06

**HERA - LAPIS**



4258-07

**HERA -  
OUTREMER**



4258-08

**HERA - FORET**



**HERA - FORET**

4258-08

