

# LELIEVRE

PARIS

## FÉLICITÉ - DORÉ

4261-01



Taken from a Quenin floral archive, the FÉLICITÉ fabric has been reworked in matt jacquard with an embroidered effect to give structure to the design. Made mainly from cotton and linen in our Panisières manufacture (EPV), it is available in six colours. Its excellent abrasion resistance makes it ideal for heavy domestic upholstery.

Collection **BELLE ÉPOQUE**

Brand **QUENIN**

### TECHNICAL DATA

Composition **Cotton 44% - Linen 37% -  
Polyamide 11% - Polyester 8%**


Width **142 cm**

Repeat cut **No**

Vertical repeat **45 cm**

Horizontal repeat **71 cm**

Drop match **No**

Care 

Uses 

Martindale test **30 000 T**

Weight / Linear metre **464 g**



# LELIEVRE

PARIS



## Available colours



4261-01  
**FELICITÉ - DORÉ**



4261-02  
**FELICITÉ - NACRE**



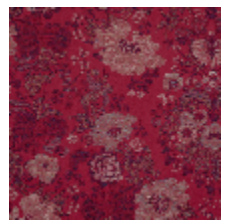
4261-03  
**FELICITÉ -  
NATTIER**



4261-04  
**FELICITÉ - BUIS**



4261-05  
**FELICITÉ - ENCRE**



4261-06  
**FELICITÉ -  
GRIOTTE**



# LELIEVRE

PARIS

## FELICITÉ - DORÉ

4261-01

