

MYOSOTIS - CAPUCINE

4262-03



From a Quenin archive and with its adorable little flowers, MYOSOTIS represents the idea of the Belle Époque collection: to modernise classics with bold colours and subtle shine. Made mainly from cotton and linen, this fabric is woven in our Panisières manufacture (EPV).

Collection	BELLE ÉPOQUE
------------	--------------

Brand	QUENIN
-------	--------

TECHNICAL DATA

Composition	Cotton 34% Linen 30% Viscose 24% Polyamide 12%
-------------	---

Width	144 cm
-------	--------


Repeat cut	No
------------	----

Vertical repeat	3 cm
-----------------	------

Horizontal repeat	3 cm
-------------------	------

Drop match	No
------------	----

Care	   
------	---

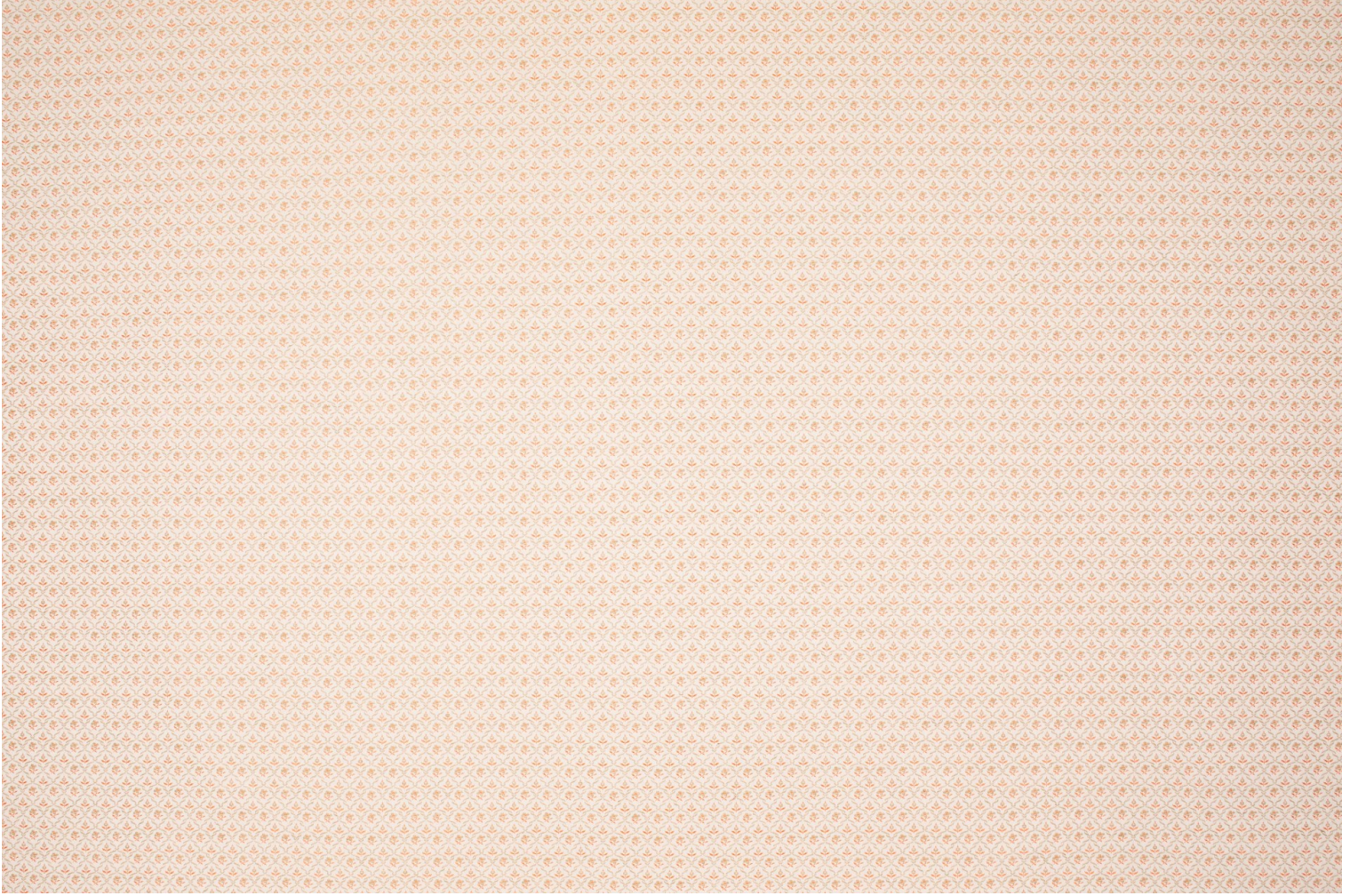
Uses	   
------	---

Martindale test	20 000 T
-----------------	----------

Weight / Linear metre	448 g
-----------------------	-------

LELIEVRE

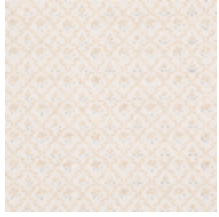
PARIS



LELIEVRE

PARIS

Available colours



4262-01
**MYOSOTIS -
NACRE**



4262-02
**MYOSOTIS -
NATTIER**



4262-03
**MYOSOTIS -
CAPUCINE**



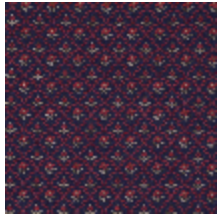
4262-04
**MYOSOTIS -
LAURIER**



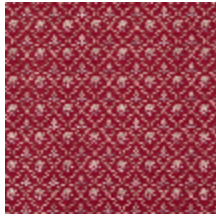
4262-05
**MYOSOTIS -
DORÉ**



4262-06
MYOSOTIS - BUIS



4262-07
**MYOSOTIS -
ENCRE**



4262-08
**MYOSOTIS -
GRIOTTE**

MYOSOTIS - CAPUCINE

4262-03

