

LELIEVRE

PARIS

MYOSOTIS - DORÉ

4262-05



From a Quenin archive and with its adorable little flowers, MYOSOTIS represents the idea of the Belle Époque collection: to modernise classics with bold colours and subtle shine. Made mainly from cotton and linen, this fabric is woven in our Panisières manufacture (EPV).

Collection **BELLE ÉPOQUE**

Brand **QUENIN**

TECHNICAL DATA

Composition **Cotton 34% Linen 30% Viscose
24% Polyamide 12%**

Width **144 cm**

Repeat cut **No**

Vertical repeat **3 cm**

Horizontal repeat **3 cm**

Drop match **No**

Care 

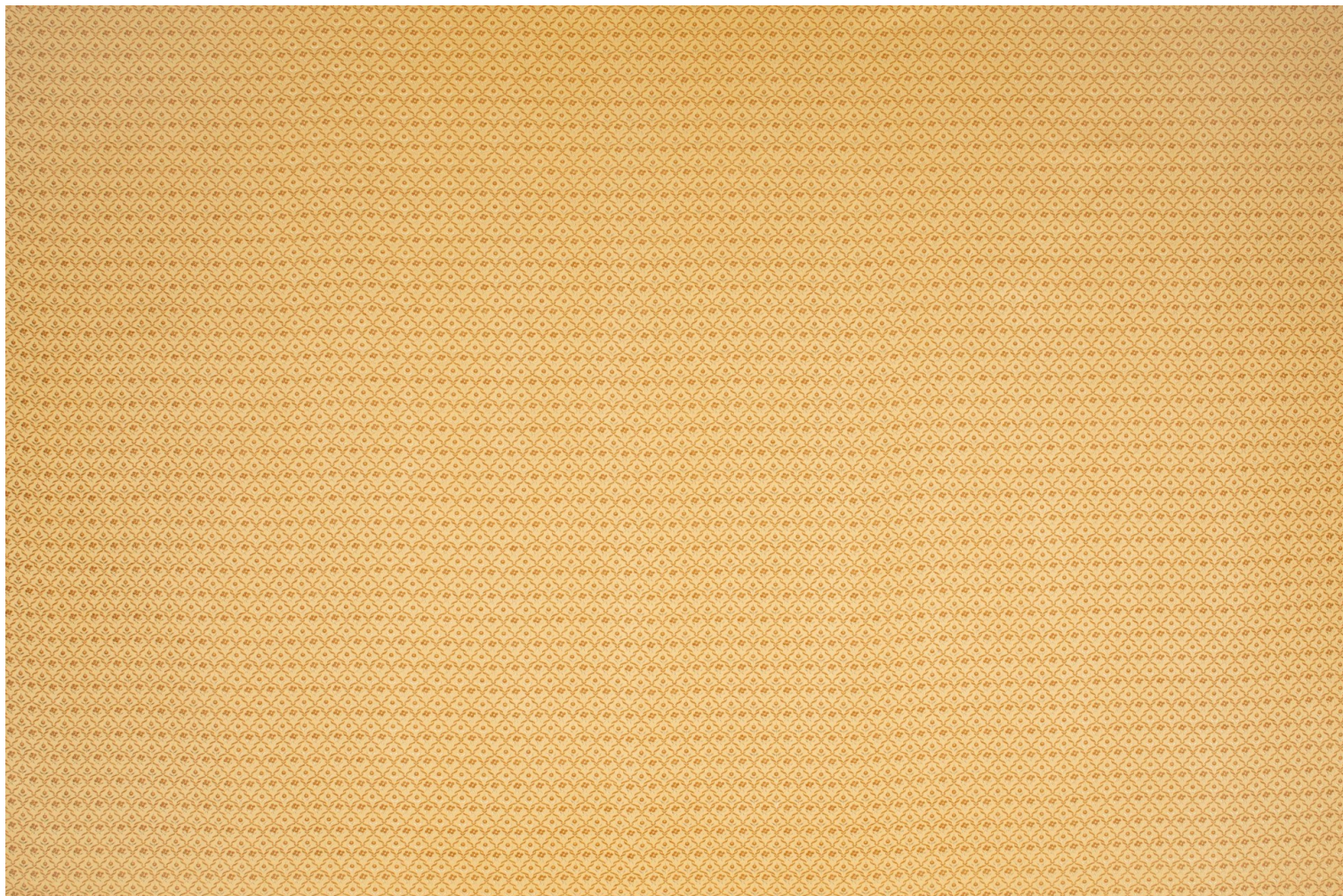
Uses 

Martindale test **20 000 T**

Weight / Linear metre **448 g**

LELIEVRE

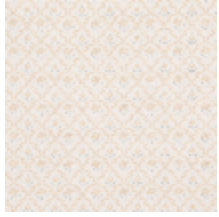
PARIS



LELIEVRE

PARIS

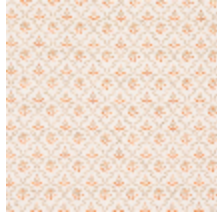
Available colours



4262-01
**MYOSOTIS -
NACRE**



4262-02
**MYOSOTIS -
NATTIER**



4262-03
**MYOSOTIS -
CAPUCINE**



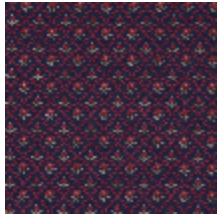
4262-04
**MYOSOTIS -
LAURIER**



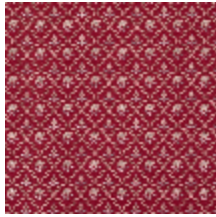
4262-05
**MYOSOTIS -
DORÉ**



4262-06
MYOSOTIS - BUIS



4262-07
**MYOSOTIS -
ENCRE**



4262-08
**MYOSOTIS -
GRIOTTE**

MYOSOTIS - DORÉ

4262-05

