

**MYOSOTIS - GRIOTTE**

4262-08



From a Quenin archive and with its adorable little flowers, MYOSOTIS represents the idea of the Belle Époque collection: to modernise classics with bold colours and subtle shine. Made mainly from cotton and linen, this fabric is woven in our Panisières manufacture (EPV).

Collection	BELLE ÉPOQUE
------------	--------------

Brand	QUENIN
-------	--------

## TECHNICAL DATA

Composition	Cotton 34% Linen 30% Viscose 24% Polyamide 12%
-------------	---

Width	144 cm
-------	--------

Repeat cut	No
------------	----

Vertical repeat	3 cm
-----------------	------

Horizontal repeat	3 cm
-------------------	------

Drop match	No
------------	----

Care	   
------	---

Uses	   
------	---

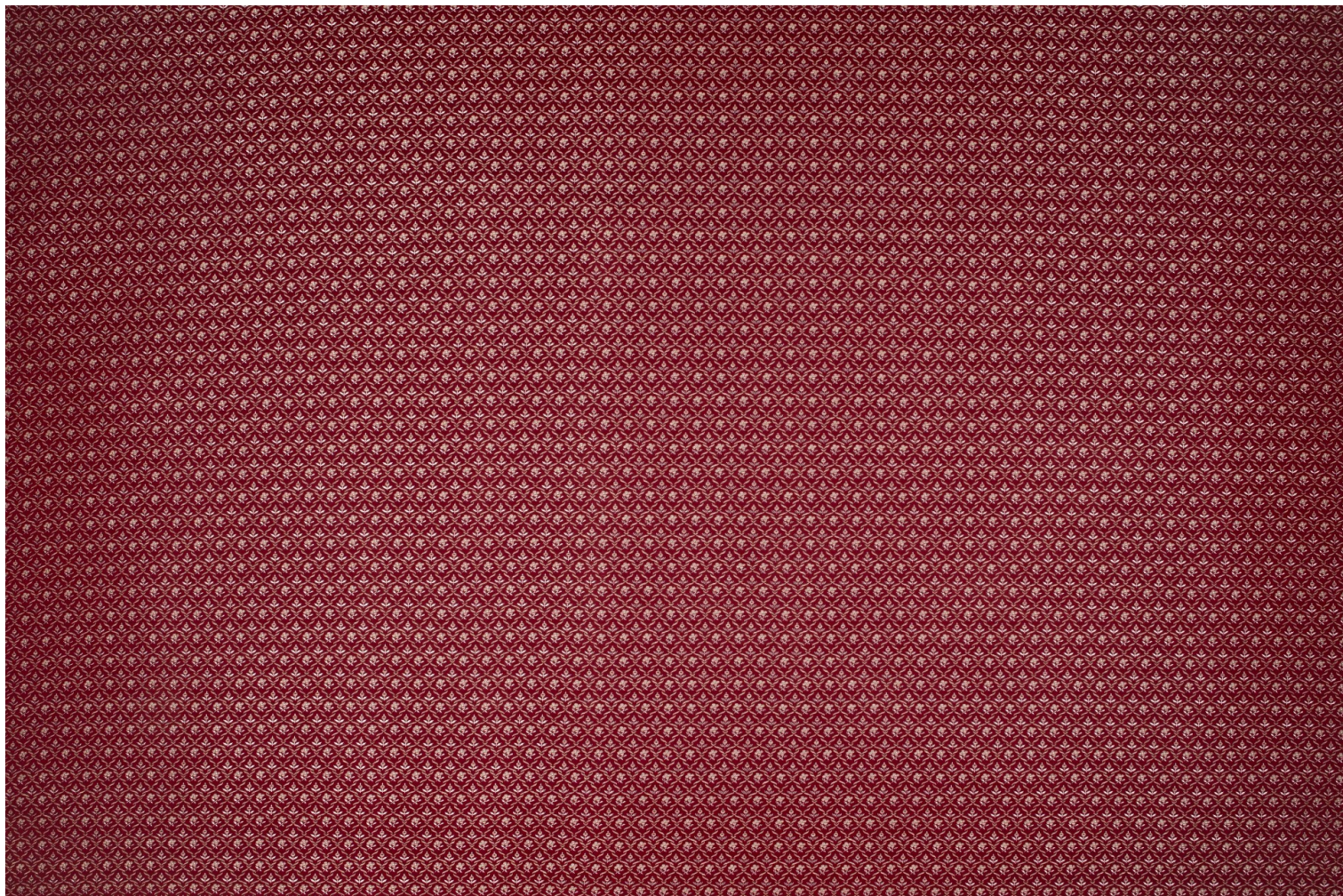
Martindale test	20 000 T
-----------------	----------

Weight / Linear metre	448 g
-----------------------	-------



LELIEVRE

PARIS

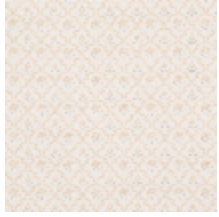




# LELIEVRE

PARIS

## Available colours



4262-01  
**MYOSOTIS -  
NACRE**



4262-02  
**MYOSOTIS -  
NATTIER**



4262-03  
**MYOSOTIS -  
CAPUCINE**



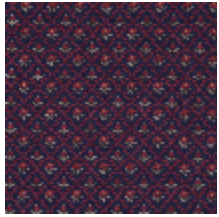
4262-04  
**MYOSOTIS -  
LAURIER**



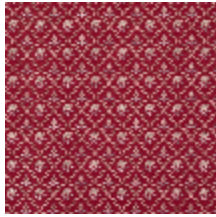
4262-05  
**MYOSOTIS -  
DORÉ**



4262-06  
**MYOSOTIS - BUIS**



4262-07  
**MYOSOTIS -  
ENCRE**



4262-08  
**MYOSOTIS -  
GRIOTTE**

**MYOSOTIS - GRIOTTE**

4262-08

