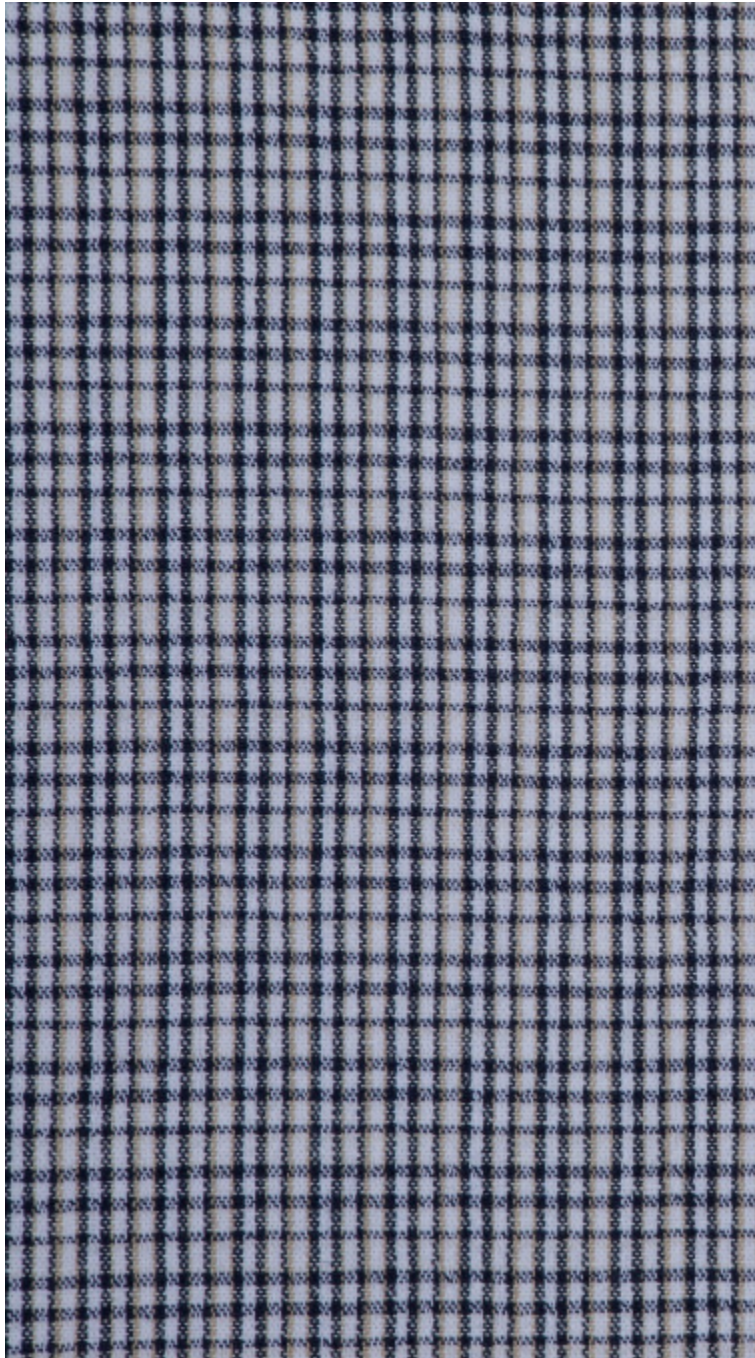


CAMBREMER - ENCRE

4265-12



Available in 15 colours and made from 100% natural fibres (linen, cotton and hemp), CAMBREMER revisits the famous Vichy pattern with a vintage washed effect, irregular in design. With its elegant fall, it is perfect as a curtain.

Collection	BELLE ÉPOQUE
------------	--------------

Brand	QUENIN
-------	--------

TECHNICAL DATA

Composition	Cotton 50% - Linen 25% - True hemp 25%
-------------	--

Width	150 cm
-------	--------

Repeat cut	No
------------	----

Vertical repeat	2 cm
-----------------	------

Horizontal repeat	2 cm
-------------------	------

Drop match	No
------------	----

Care	
------	--

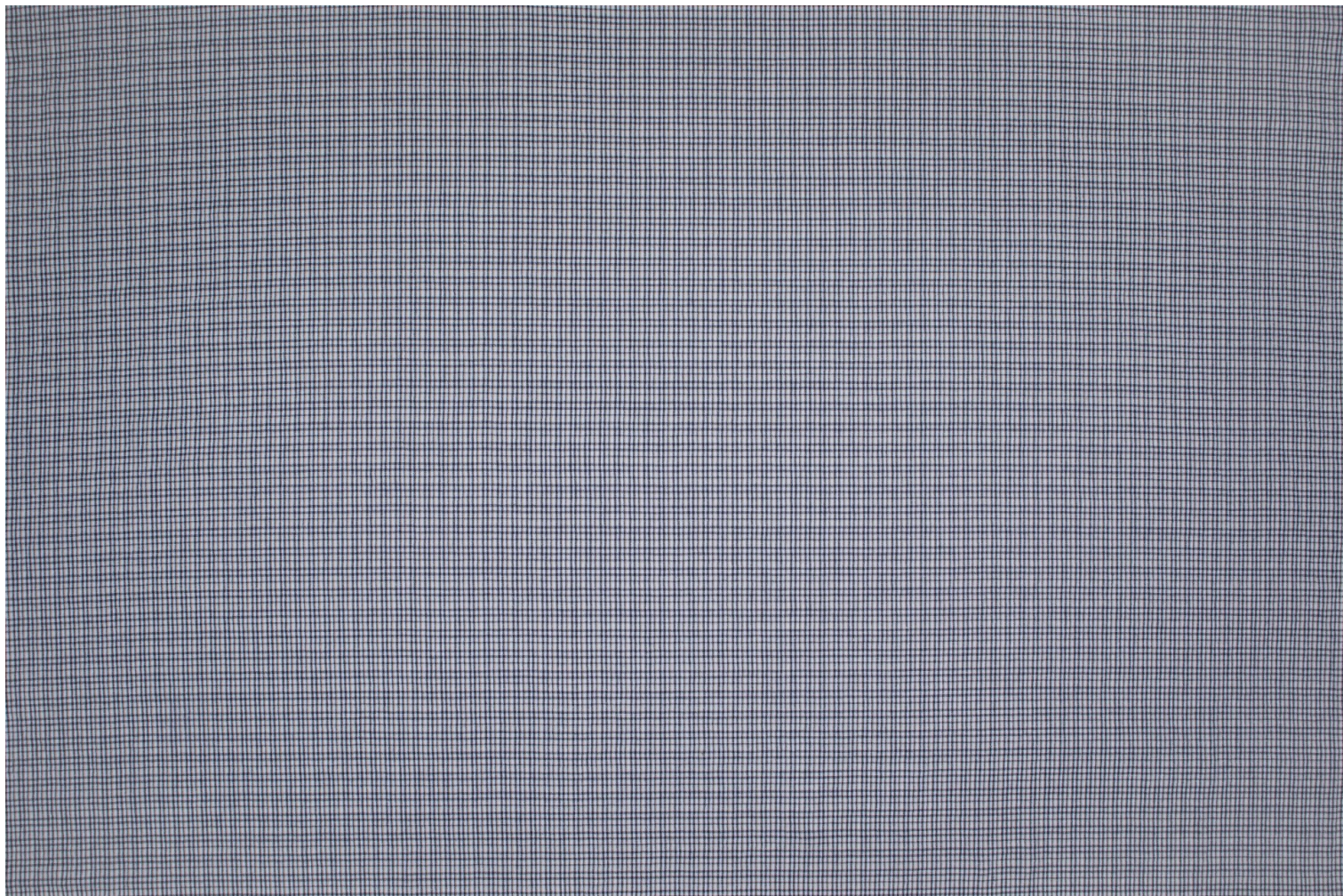
Uses	
------	--

Martindale test	20 000 T
-----------------	----------

Weight / Linear metre	410 g
-----------------------	-------

LELIEVRE

PARIS



LELIEVRE

PARIS

Available colours



4265-01
**CAMBREMER -
PERLE**



4265-02
**CAMBREMER -
BEIGE**



4265-03
**CAMBREMER -
ÉBÈNE**



4265-04
**CAMBREMER -
OCRE**



4265-05
**CAMBREMER -
TOURNESOL**



4265-06
**CAMBREMER -
CORNALINE**



4265-07
**CAMBREMER -
BURGUNDY**



4265-08
**CAMBREMER -
GRLOTTE**



4265-09
**CAMBREMER -
PÉTALE**



4265-10
**CAMBREMER -
PORCELAINÉ**



4265-11
**CAMBREMER -
CIEL**



4265-12
**CAMBREMER -
ENCRE**



4265-13
**CAMBREMER -
AGAVE**



4265-14
**CAMBREMER -
PRAIRIE**



4265-15
**CAMBREMER -
KAKI**

CAMBREMER - ENCRE

4265-12

