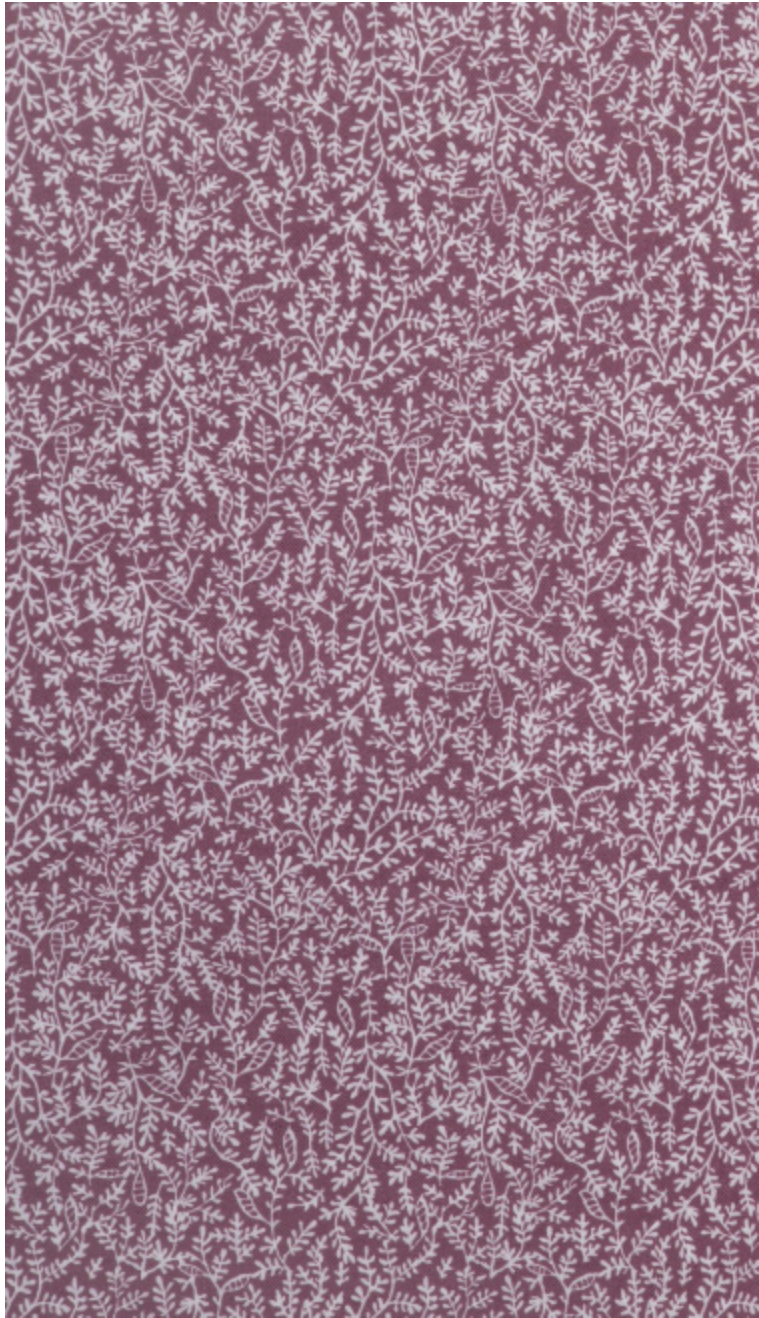


## LEONTINE – BOIS DE ROSE

4268-05



This pretty floral motif is printed on a 100% cotton canvas. The design comes from the background of the AUGUSTINE stripe (4267) and completes the duo formed by the ÉGLANTINE floral indienne (4266) and the AUGUSTINE stripe (4267).

Collection	BELLE ÉPOQUE
------------	--------------

Brand	QUENIN
-------	--------

## TECHNICAL DATA

Composition	Cotton 100%
-------------	-------------

Width	134 cm
-------	--------

Repeat cut	No
------------	----

Vertical repeat	10 cm
-----------------	-------

Horizontal repeat	7 cm
-------------------	------

Drop match	No
------------	----

Care	
------	--

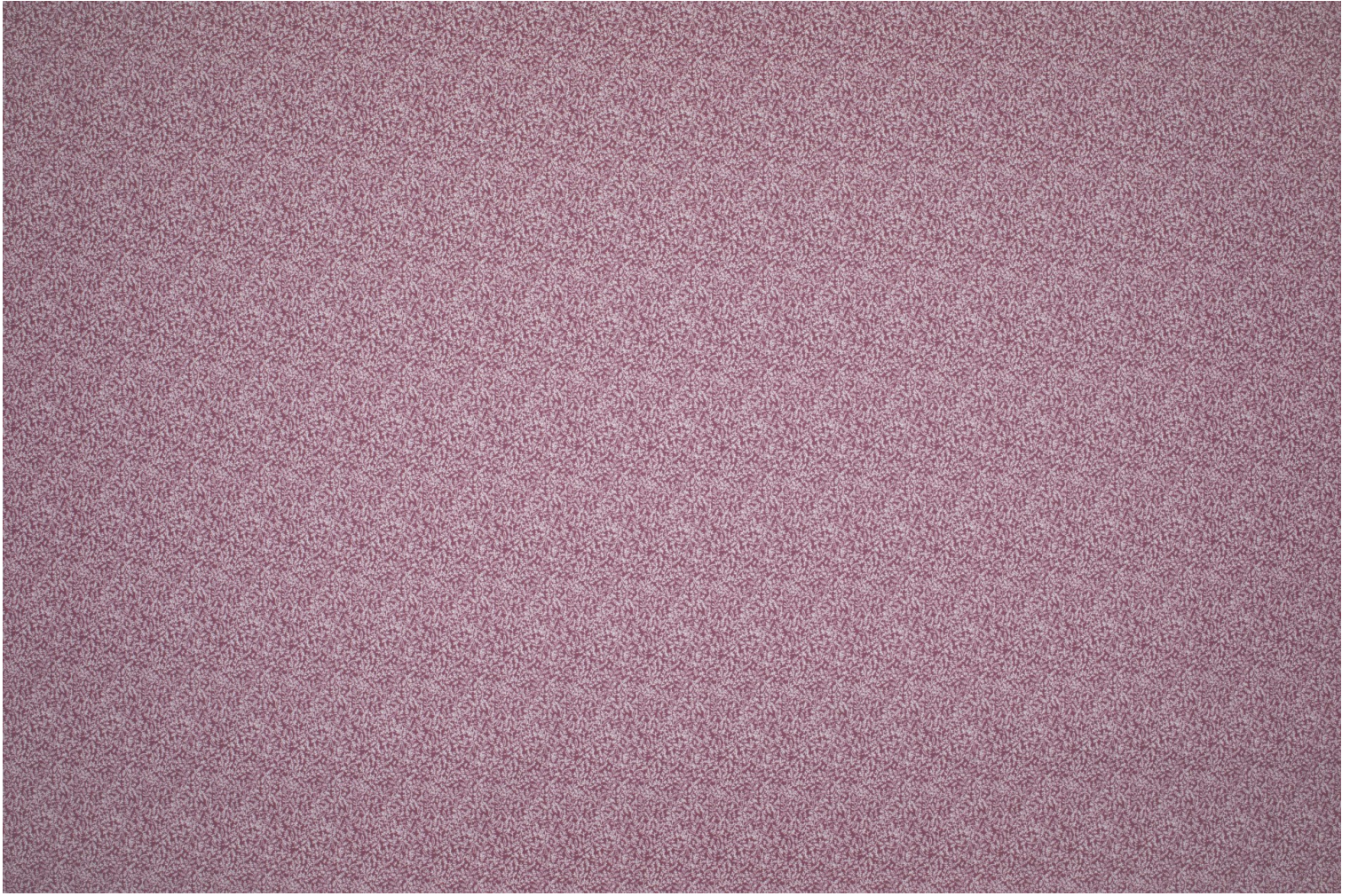
Uses	
------	--

Martindale test	20 000 T
-----------------	----------

Weight / Linear metre	252 g
-----------------------	-------

# LELIEVRE

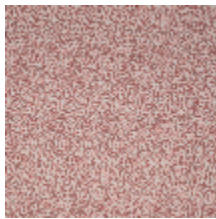
PARIS



## Available colours



4268-01  
**LEONTINE -  
NATUREL**



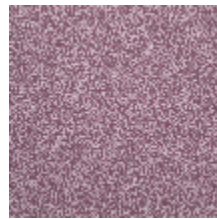
4268-02  
**LEONTINE -  
TOMETTE**



4268-03  
**LEONTINE - KAKI**



4268-04  
**LEONTINE -  
GRIOTTE**



4268-05  
**LEONTINE - BOIS  
DE ROSE**



4268-06  
**LEONTINE - CIEL**

**LEONTINE - BOIS DE ROSE**

4268-05

