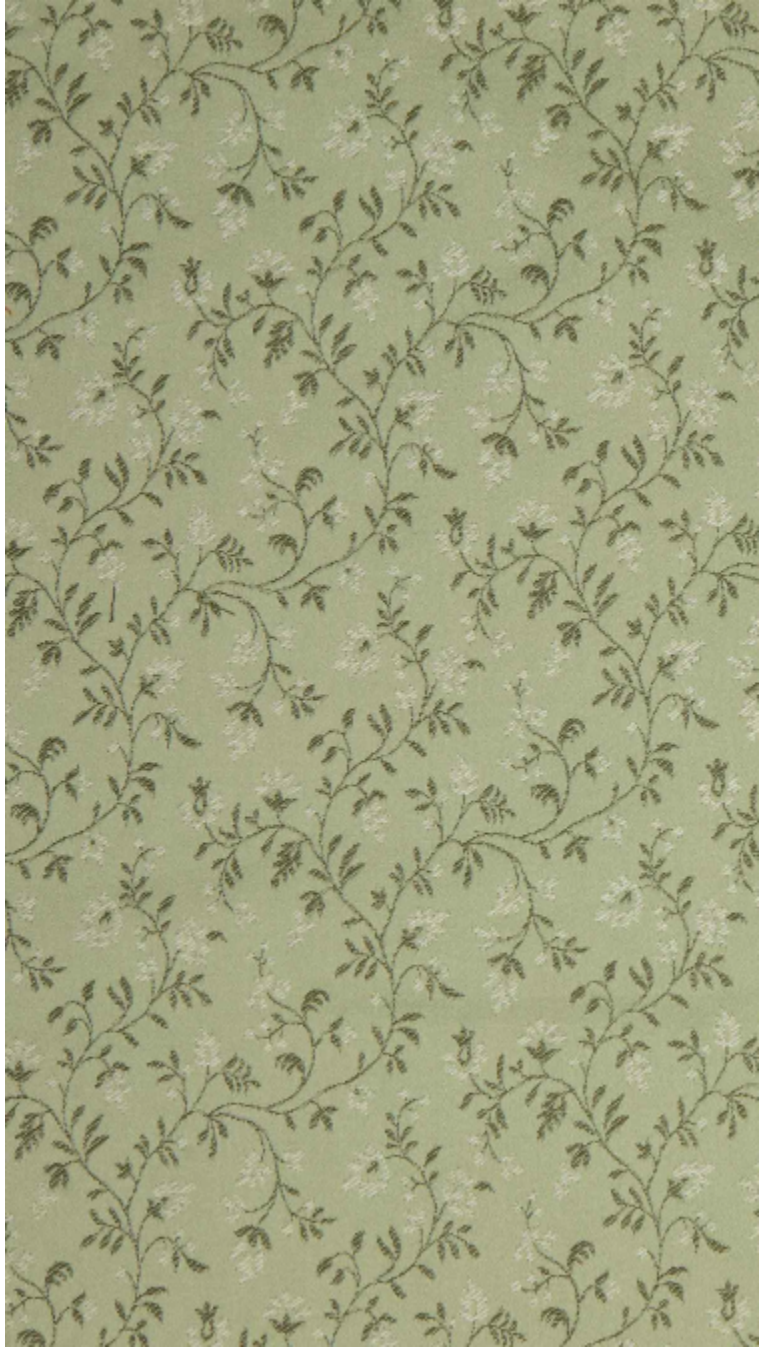


BRINDILLE - AMANDE

4280-03



On a satin background, BRINDILLE unfolds a stylized floral pattern on an intimate scale. Woven in Maison Lelièvre's mill, it embodies the discreet grace of an timeless motif, soft yet assertive.

Collection	FESTIVITÉS
------------	------------

Brand	QUENIN
-------	--------

TECHNICAL DATA

Type	Jacquard
------	----------

Composition	80% Cotton - 20% Polyamide
-------------	----------------------------

Width	140 cm
-------	--------

Repeat cut	No
------------	----

Vertical repeat	14 cm
-----------------	-------

Horizontal repeat	14 cm
-------------------	-------

Half drop match	No
-----------------	----

Care	  
------	---

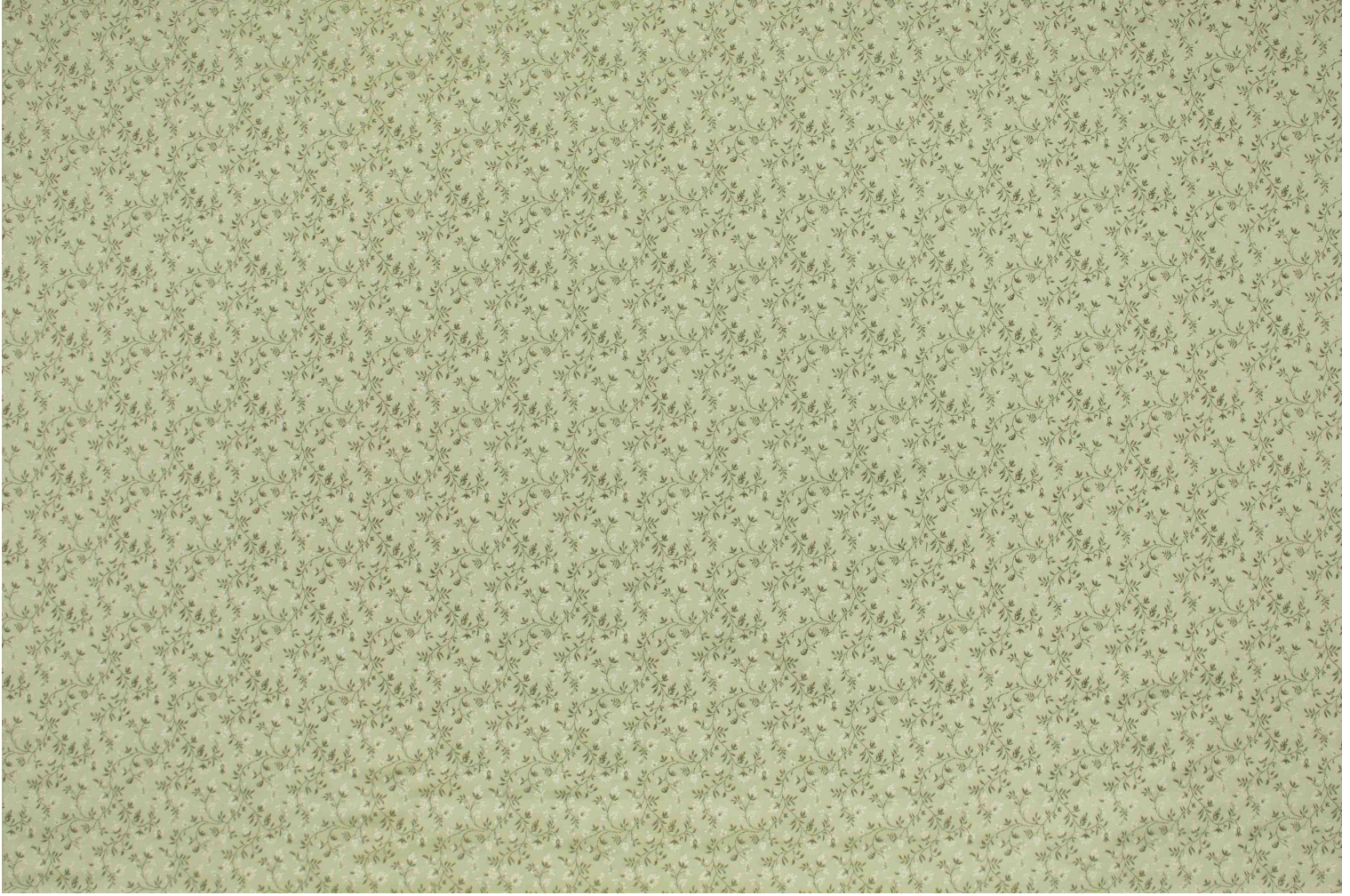
Uses	   
------	---

Martindale test	40 000 T
-----------------	----------

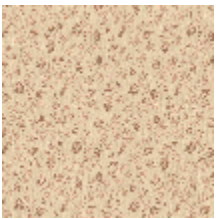
Weight / Linear metre	450 g
-----------------------	-------

LELIEVRE

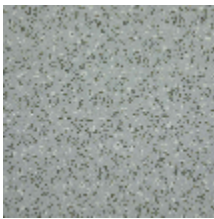
PARIS



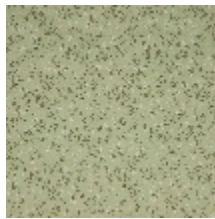
Available colours



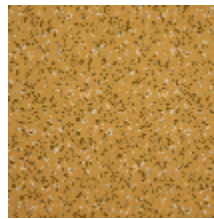
4280-01
**BRINDILLE -
NATUREL**



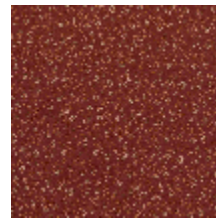
4280-02
**BRINDILLE -
NATTIER**



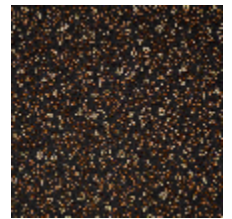
4280-03
**BRINDILLE -
AMANDE**



4280-04
BRINDILLE - DORE



4280-05
**BRINDILLE -
ACAJOU**



4280-06
BRINDILLE - NOIR