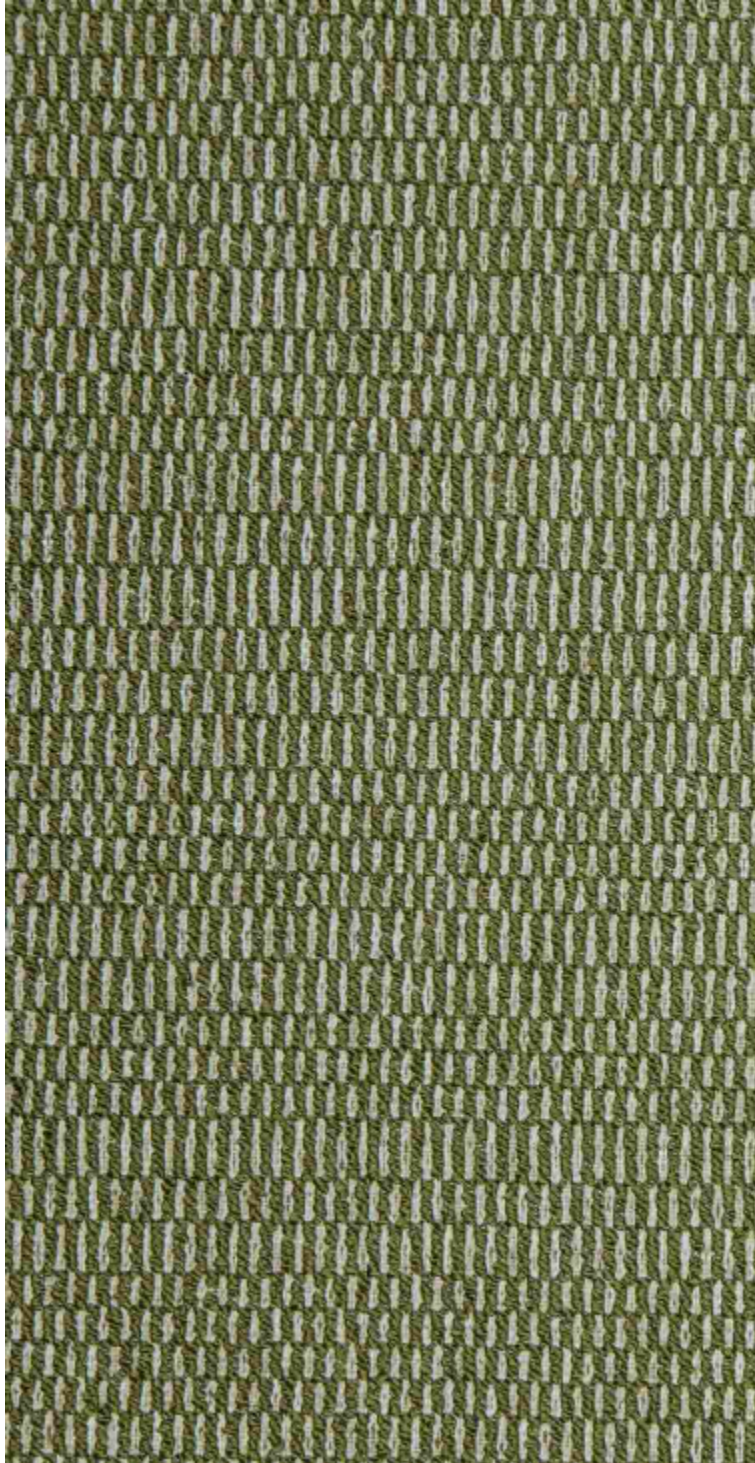


ANTIGUA - KAKI

5056-07



Bold and graphic, ANTIGUA stands out with its textured relief and geometric motifs inspired by Caribbean crafts. Thick threads trace sculpted lines, expressing the raw strength of natural materials.

Collection	ILES DU VENT
------------	--------------

Brand	LELIÈVRE PARIS OUTDOOR
-------	------------------------

TECHNICAL DATA

Type	Outdoor
------	---------

Composition	Polypropylene 100%
-------------	--------------------

Width	133 cm
-------	--------

Repeat cut	No
------------	----

Vertical repeat	37 cm
-----------------	-------

Horizontal repeat	1 cm
-------------------	------

Half drop match	No
-----------------	----

Care	  
------	---

Uses	  
------	---

Martindale test	40 000 T
-----------------	----------

Weight / Linear metre	1 154 g
-----------------------	---------

Fire rating	EN1021-1&2
-------------	------------

LELIEVRE

PARIS



LELIEVRE

PARIS

Available colours



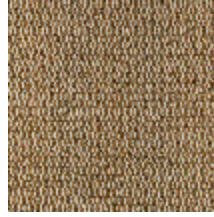
5056-01
**ANTIGUA -
NATUREL**



5056-02
**ANTIGUA -
FICELLE**



5056-03
ANTIGUA - NOIR



5056-04
**ANTIGUA -
BRONZE**



5056-05
**ANTIGUA -
TOMETTE**



5056-06
ANTIGUA - SOLEIL



5056-07
ANTIGUA - KAKI



5056-08
ANTIGUA - AZUR



5056-09
**ANTIGUA -
OCEAN**

LELIEVRE

PARIS

ANTIGUA - KAKI

5056-07

