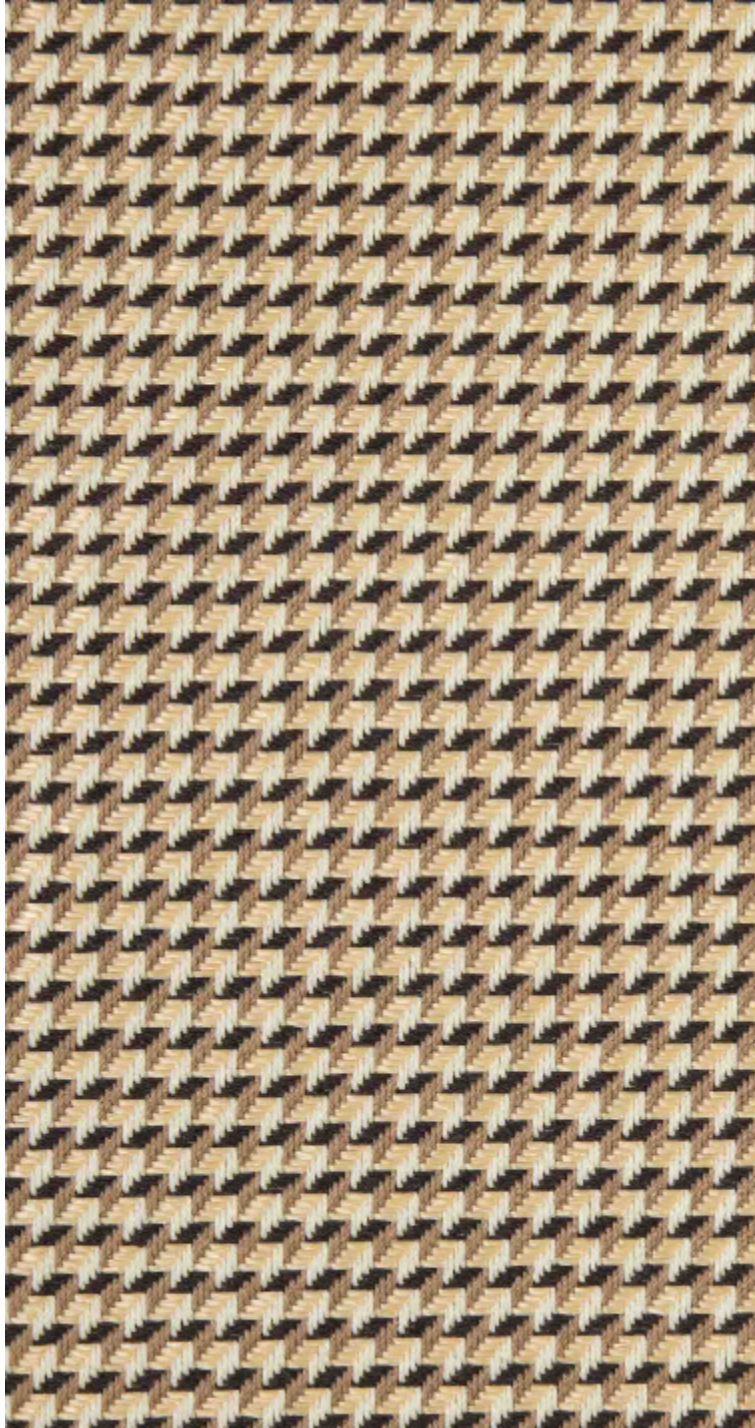


# LELIEVRE

PARIS

## CANNAGE - POIVRE

5078-04



A contemporary interpretation of cane weaving. The geometric pattern plays with transparency, sheen and structure for a smart and architectural look.

---

Collection	ESCALES LOINTANES
------------	-------------------

---

Brand	LELIEVRE PARIS
-------	----------------

---

### TECHNICAL DATA

---

Type	Jacquard
------	----------

---

Composition	60%Cotton - 20%Polyester - 16%Polietilenic - 4%Other fibres
-------------	---

---

Width	144 cm
-------	--------

---

Repeat cut	No
------------	----

---

Vertical repeat	1 cm
-----------------	------

---

Horizontal repeat	1 cm
-------------------	------

---

Half drop match	No
-----------------	----

---

Care	   
------	---

---

Uses	  
------	---

---

Martindale test	100 000 T
-----------------	-----------

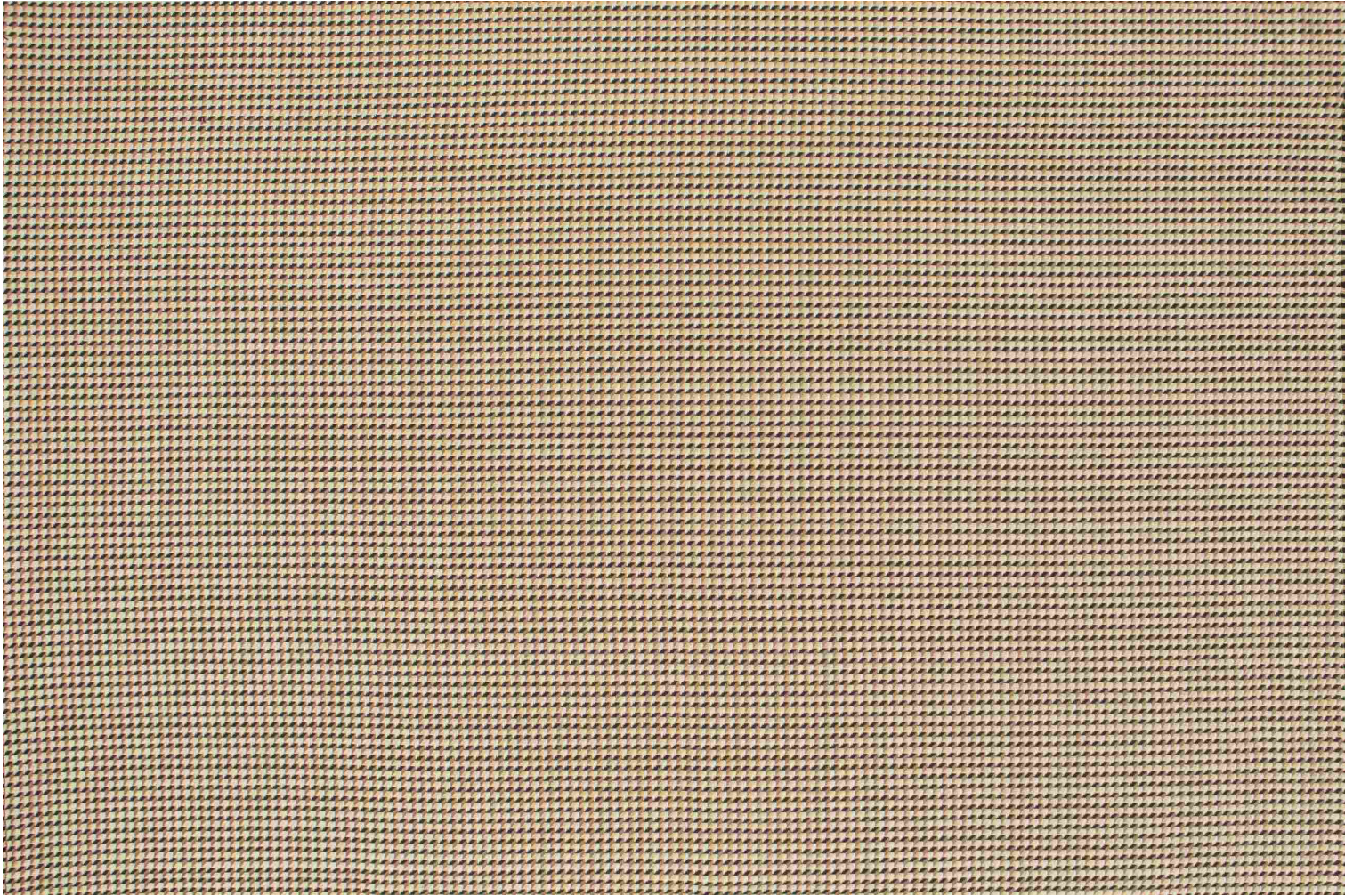
---

Weight / Linear metre	860 g
--------------------------	-------

---

# LELIEVRE

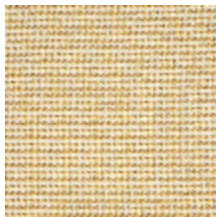
PARIS



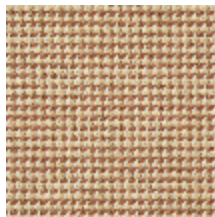
## Available colours



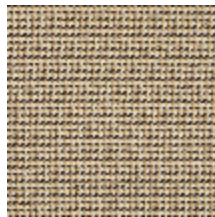
5078-01  
**CANNAGE -  
BEIGE**



5078-02  
**CANNAGE - DORE**



5078-03  
**CANNAGE -  
TERRACOTTA**



5078-04  
**CANNAGE -  
POIVRE**



5078-05  
**CANNAGE -  
AGAVE**

**CANNAGE - POIVRE**

5078-04

# LELIEVRE

PARIS

# LELIEVRE

PARIS

