

# LELIEVRE

PARIS

## VACOA - LAGON

0568-01



A look inspired by the Réunion Island, the local architecture, the entangled leaves of the Vacoa shrub are sublimated by the art of basketwork. A ribbon motif in relief has a 3D effect. The surface is enlivened by 11 vivid tints, bold or neutral. The feel is soft, matt and the fabric can be used for upholstery, accessories, curtains and wall coverings with infinite possibilities.

Collection **EVASIONS**

Brand **LELIEVRE**

### TECHNICAL DATA

Composition **Viscose 98% - Polyamide 2%**

Width **140 cm**

Repeat cut **No**

Vertical repeat **8 cm**

Horizontal repeat **4 cm**

Drop match **No**

Care    

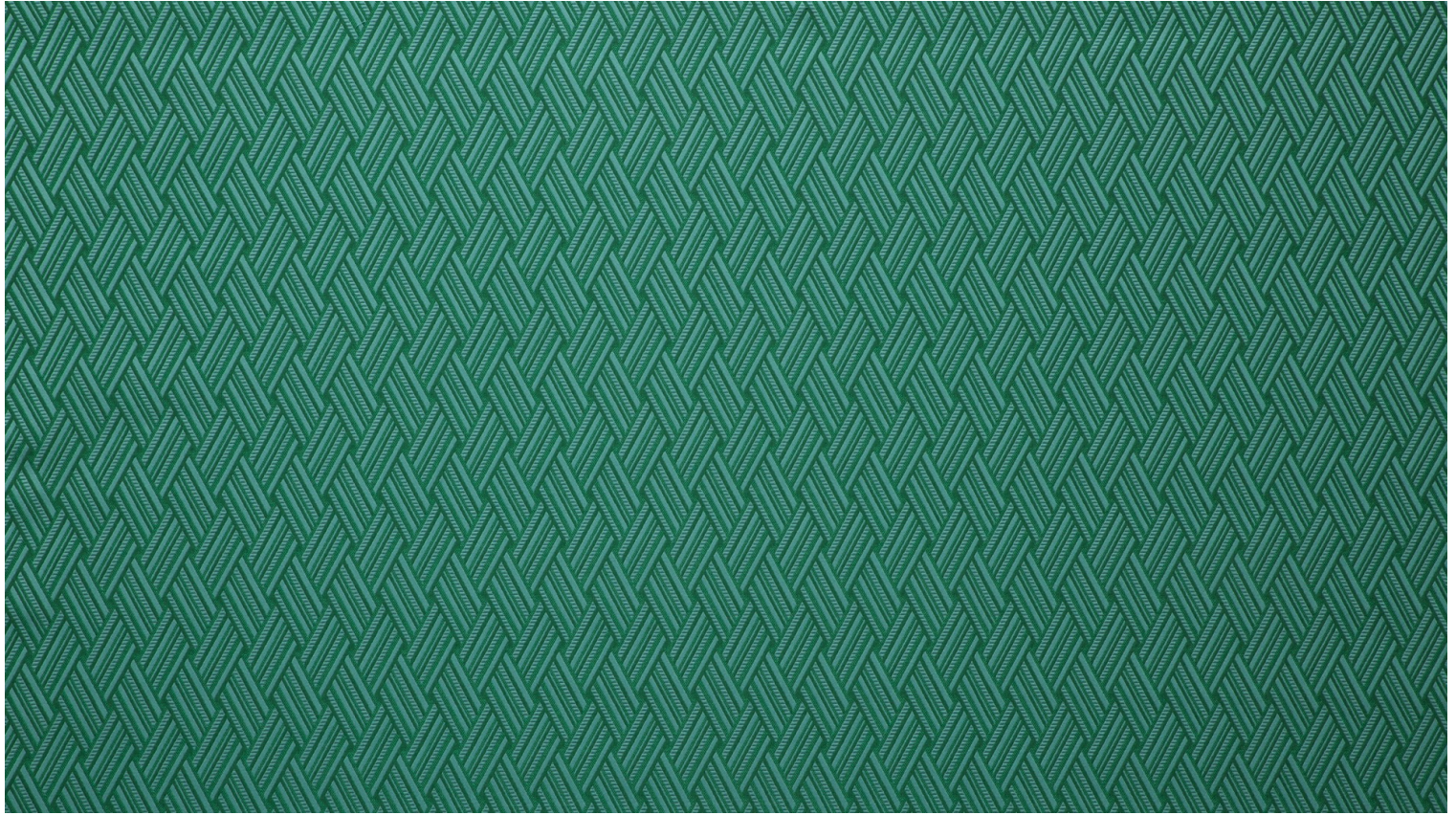
Uses    

Martindale test **35 000 T**

Weight / Linear metre **720 g**

# LELIEVRE

PARIS



## Available colours



0568-01  
**VACOA - LAGON**



0568-02  
**VACOA - NAUTIQUE**



0568-03  
**VACOA - CANARD**



0568-04  
**VACOA - FUSAIN**



0568-05  
**VACOA - BRUME**



0568-06  
**VACOA - NATUREL**



0568-07  
**VACOA - BRONZE**



0568-08  
**VACOA - SOLEIL**



0568-09  
**VACOA - TOMETTE**



0568-10  
**VACOA - FUCHSIA**



0568-11  
**VACOA - ABRICOT**

# LELIEVRE

PARIS

## VACOA - LAGON

0568-01

