

# LELIEVRE

PARIS

## VALLAURIS - AGAVE

0576-07



This fabric is an homage to the coastal village legendary for its ceramics workshops. The chiselled jacquard patterns in the rich and dense pile of this cotton velvet express the rigour of paving or the precision of a mosaic due to its geometric design. The range of bright and acid colours pays tribute to the famous vintage enamels of Vallauris.

---

Collection	RIVIERA
------------	---------

---

Brand	LELIÈVRE
-------	----------

---

### TECHNICAL DATA

---

Composition	Cotton 88% - Polyester 12%
-------------	----------------------------

---

Width	139 cm
-------	--------

---

Repeat cut	No
------------	----

---

Vertical repeat	19 cm
-----------------	-------



---

Horizontal repeat	9 cm
-------------------	------


---

Drop match	No
------------	----

---

Care	   
------	---

---

Uses	   
------	---

---

Martindale test	40 000 T
-----------------	----------

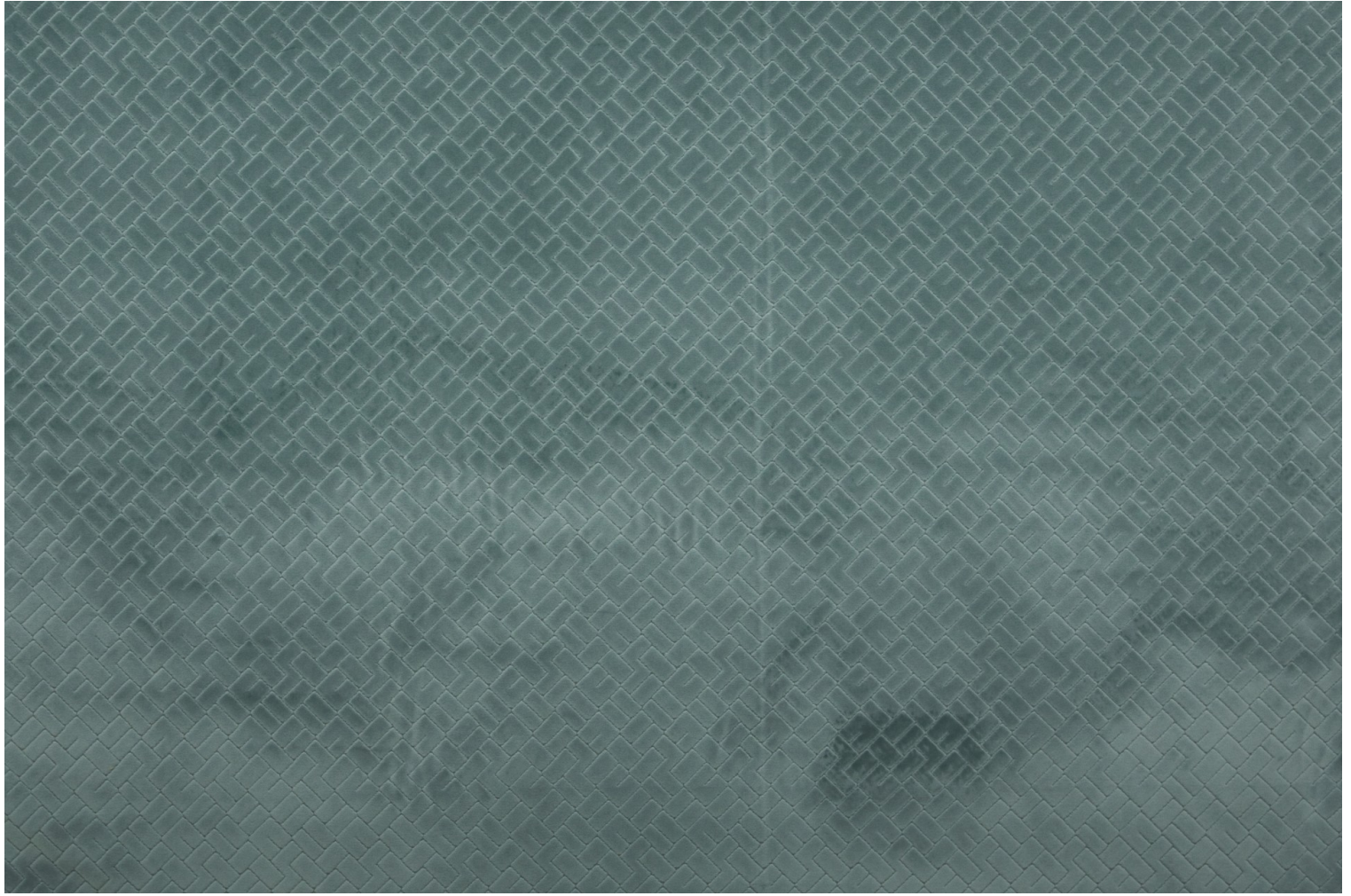
---

Weight / Linear metre	700 g
-----------------------	-------

---

# LELIEVRE

PARIS



[lelievrepairs.com](http://lelievrepairs.com)  
[contact@lelievrepairs.com](mailto:contact@lelievrepairs.com)

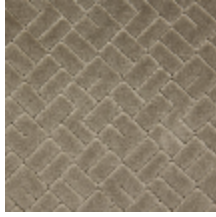
# LELIEVRE

PARIS

## Available colours



0576-01  
**VALLAURIS -  
ORAGE**



0576-02  
**VALLAURIS -  
MINERAL**



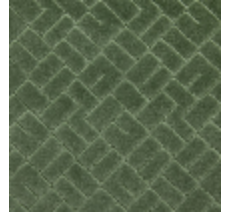
0576-03  
**VALLAURIS -  
DUNE**



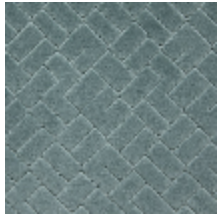
0576-04  
**VALLAURIS -  
ORGEAT**



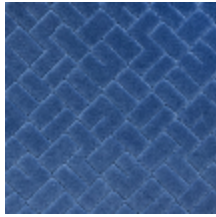
0576-05  
**VALLAURIS -  
CITRON**



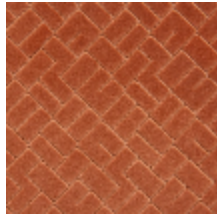
0576-06  
**VALLAURIS -  
ALOES**



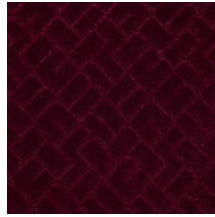
0576-07  
**VALLAURIS -  
AGAVE**



0576-08  
**VALLAURIS -  
GRECE**



0576-09  
**VALLAURIS -  
TERRACOTTA**



0576-10  
**VALLAURIS -  
SYRAH**

**VALLAURIS - AGAVE**

0576-07

