

# LELIEVRE

PARIS

## LHASA - MORDORE

0628-04



Inspired by the prayer wheels in Buddhist temples, this design on a woven ground is enriched with hand-painted metallic planes of colour. This luxurious, delicate fabric is elevated by this artisanal touch, turning every metre of this material into a unique piece. Lhasa is available in 4 colourways, in more contrasting, denser tortoiseshell colourways as well as more current terracotta shades up to soft and luminous celadon. This fabric is recommended for curtains and wall hangings.

---

Collection	HIMALAYA
------------	----------

---

Brand	LELIÈVRE
-------	----------

---

### TECHNICAL DATA

---

Composition	Viscose 41% - Cotton 28% - Polyester 23% - Silk 8%
-------------	---

---

Width	139 cm
-------	--------

---

Repeat cut	No
------------	----

---

Vertical repeat	81 cm
-----------------	-------

---

Horizontal repeat	69 cm
-------------------	-------

---

Drop match	No
------------	----

---

Care	   
------	---

---

Uses	  
------	---

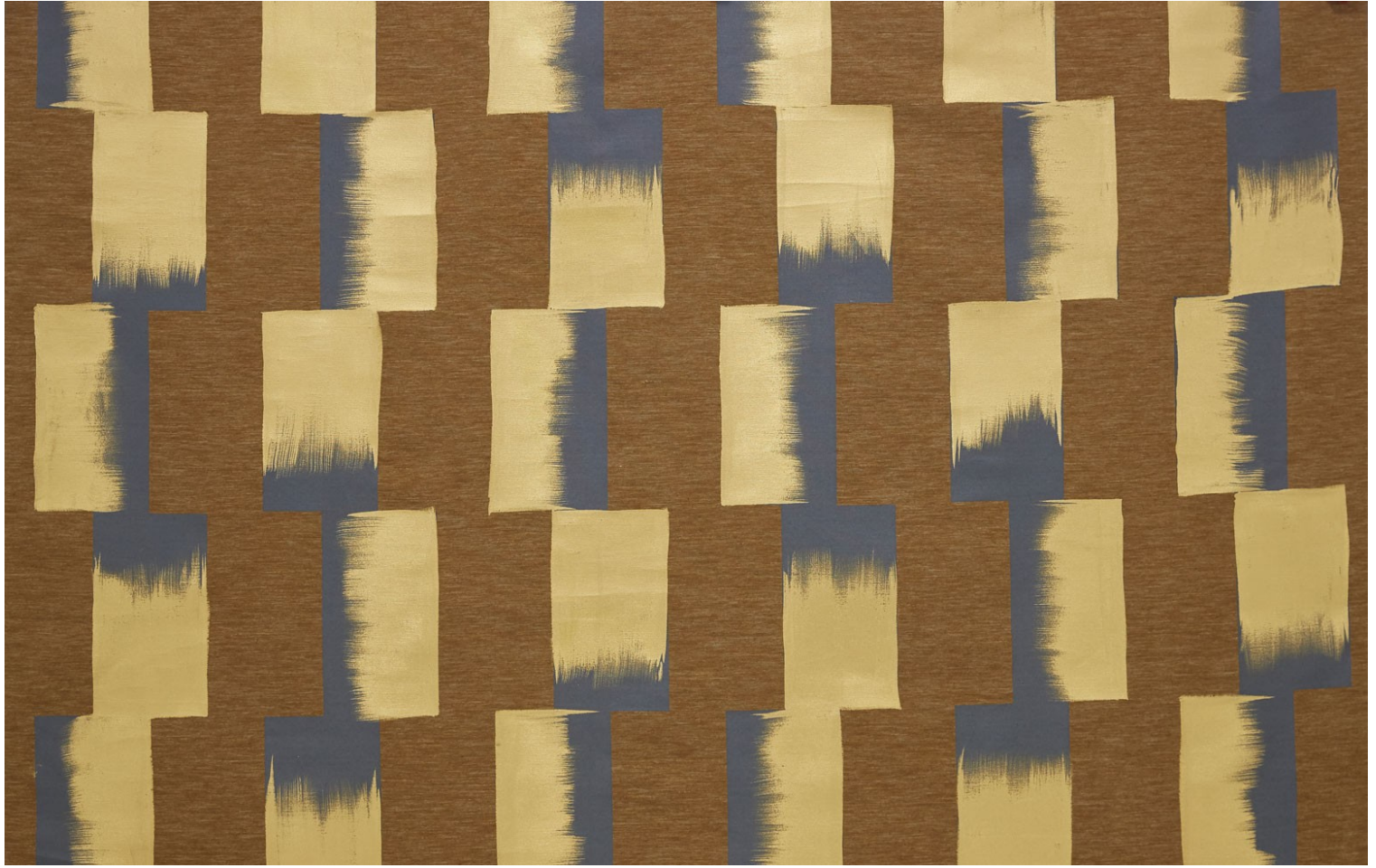
---

Weight / Linear metre	380 g
-----------------------	-------

---

# LELIEVRE

PARIS



## Available colours



0628-01  
**LHASSA - CUIVRE**



0628-02  
**LHASSA -  
CELADON**



0628-03  
**LHASSA - NACRE**



0628-04  
**LHASSA -  
MORDORE**



**LHASA - MORDORE**

0628-04

