

# LELIEVRE

PARIS

## KHAN - JADE

0630-02



This jacquard composed of small motifs is inspired by the embroidery and adornments of Nepalese women. The delicacy of its weave will add a touch of refinement and luxury to both contemporary and classic seating.

---

Collection	HIMALAYA
------------	----------

---

Brand	LELIEVRE
-------	----------

---

### TECHNICAL DATA

---

Composition	Polyester 60% - Cotton 28% - Viscose 12%
-------------	---

---

Width	142 cm
-------	--------

---

Repeat cut	No
------------	----

---

Vertical repeat	14 cm
-----------------	-------

---

Horizontal repeat	12 cm
-------------------	-------


---

Drop match	No
------------	----

---

Care	   
------	---

---

Uses	  
------	---

---

Martindale test	27 000 T
-----------------	----------

---

Weight / Linear metre	580 g
--------------------------	-------

---



# LELIEVRE

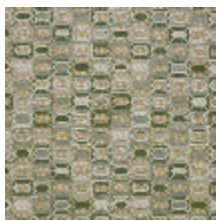
PARIS



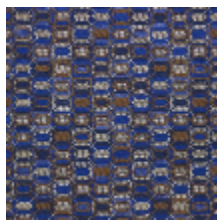
## Available colours



0630-01  
**KHAN -  
MORDORE**



0630-02  
**KHAN - JADE**



0630-03  
**KHAN - LAPIS**



0630-04  
**KHAN -  
CORNALINE**



0630-05  
**KHAN - QUARTZ**



0630-06  
**KHAN - NACRE**



**KHAN - JADE**

0630-02

