

LELIEVRE

PARIS

KHAN - CORNALINE

0630-04



This jacquard composed of small motifs is inspired by the embroidery and adornments of Nepalese women. The delicacy of its weave will add a touch of refinement and luxury to both contemporary and classic seating.

Collection	HIMALAYA
------------	----------

Brand	LELIEVRE PARIS
-------	----------------

TECHNICAL DATA

Type	Jacquard
------	----------

Composition	Polyester 60% - Cotton 28% - Viscose 12%
-------------	---

Width	142 cm
-------	--------

Repeat cut	No
------------	----

Vertical repeat	14 cm
-----------------	-------

Horizontal repeat	12 cm
-------------------	-------

Half drop match	No
-----------------	----

Care	  
------	---

Uses	  
------	---

Martindale test	27 000 T
-----------------	----------

Weight / Linear metre	580 g
-----------------------	-------

LELIEVRE

PARIS



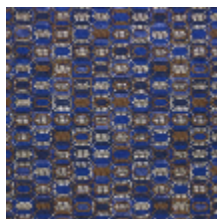
Available colours



0630-01
**KHAN -
MORDORE**



0630-02
KHAN - JADE



0630-03
KHAN - LAPIS



0630-04
**KHAN -
CORNALINE**



0630-05
KHAN - QUARTZ



0630-06
KHAN - NACRE

KHAN - CORNALINE

0630-04

