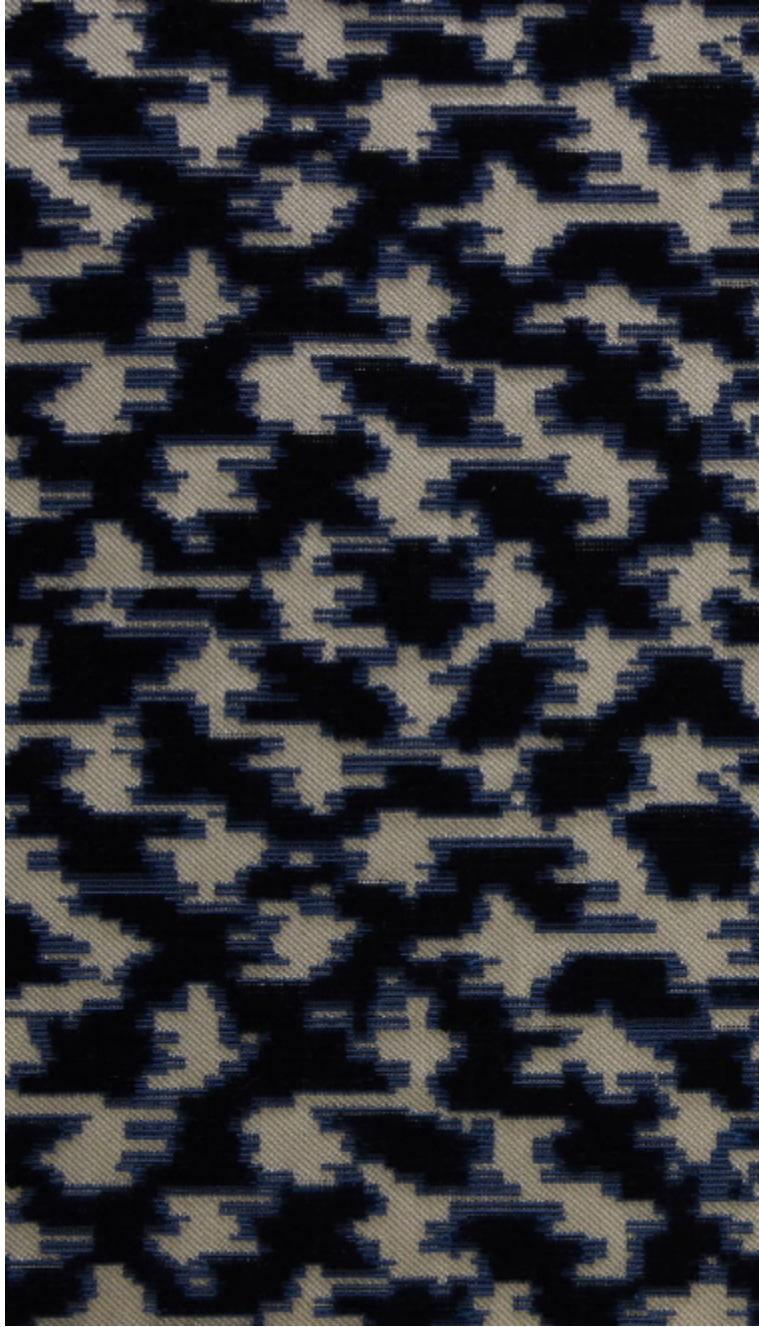


LELIEVRE

PARIS

BOUKHARA - MARINE

0632-06



Boukhara is a viscose jacquard velvet, whose pile is crimped ornamentally. This rich, ornamental fabric reinterprets ikat, which was very popular in the towns of Bukhara and Samarkand in the 19th century. Available in 5 colourways from sparkling colours to more classic shades.

Brand	QUENIN
-------	--------

TECHNICAL DATA

Composition	Viscose 62% - Polyester 24% - Cotton 14%
-------------	--

Width	140 cm
-------	--------

Repeat cut	No
------------	----

Vertical repeat	16 cm
-----------------	-------

Horizontal repeat	17 cm
-------------------	-------

Drop match	No
------------	----

Care	   
------	---

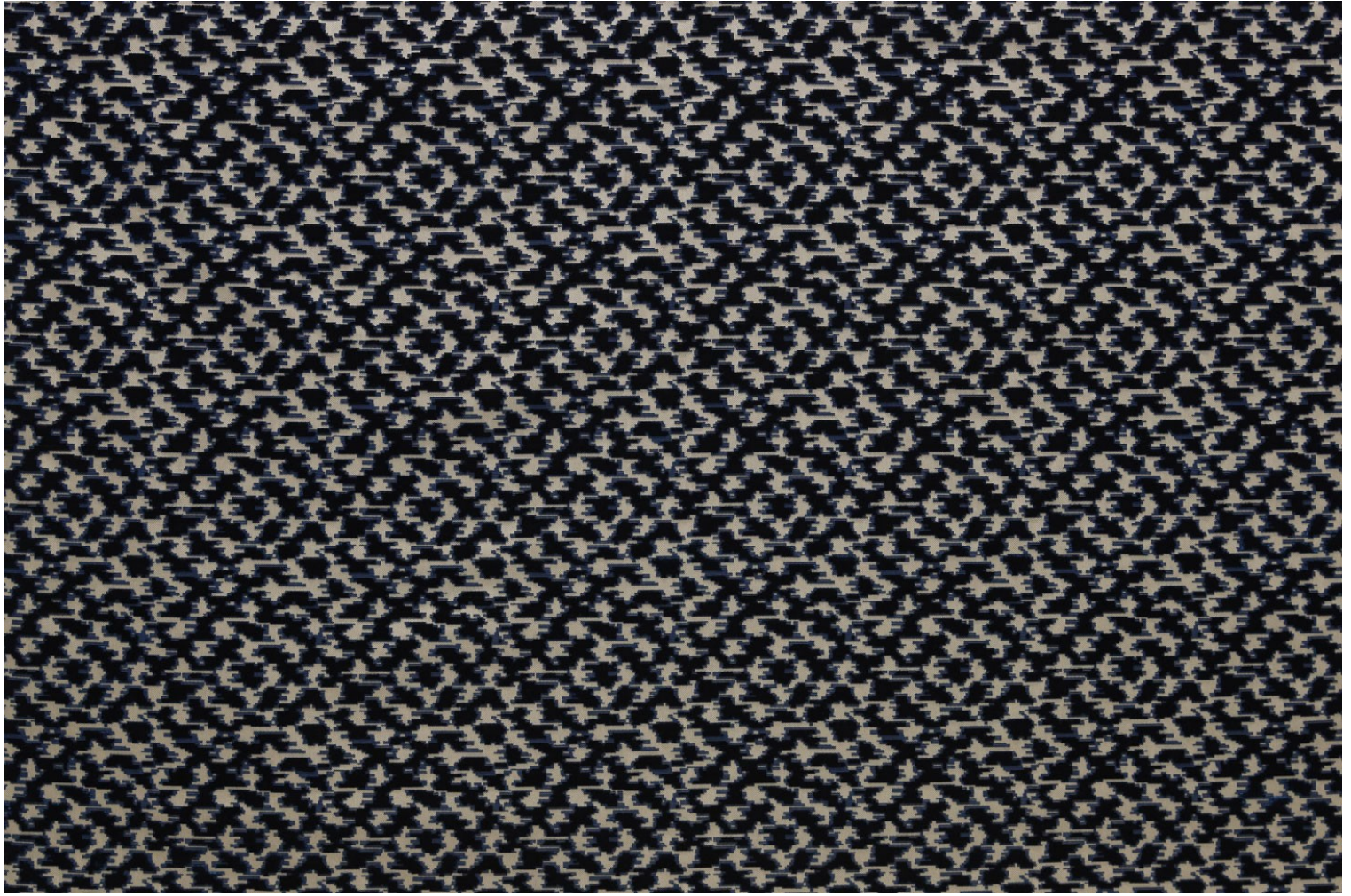
Uses	   
------	---

Martindale test	40 000 T
-----------------	----------

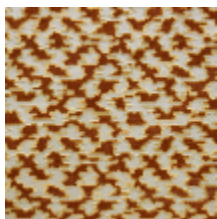
Weight / Linear metre	730 g
-----------------------	-------

LELIEVRE

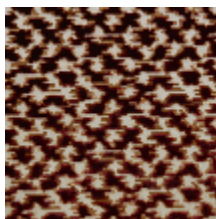
PARIS



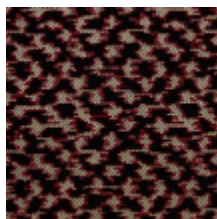
Available colours



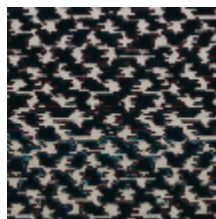
0632-02
**BOUKHARA -
MIEL**



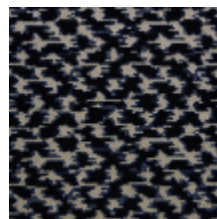
0632-03
**BOUKHARA -
COGNAC**



0632-04
**BOUKHARA -
BURGUNDY**



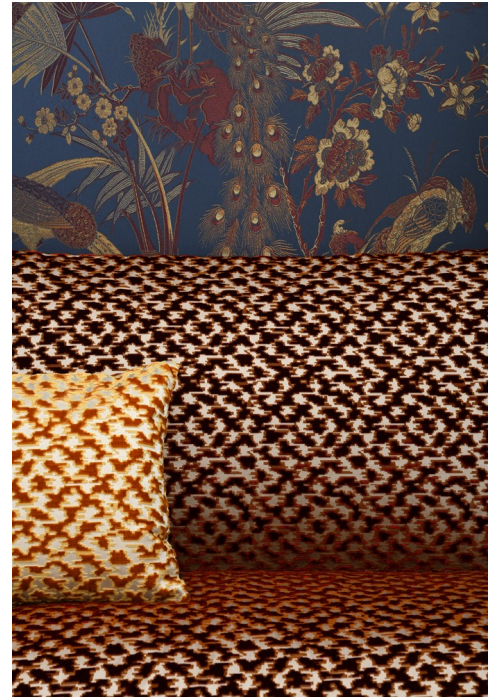
0632-05
**BOUKHARA -
CANARD**



0632-06
**BOUKHARA -
MARINE**

BOUKHARA - MARINE

0632-06



@katekengelbach