

# LELIEVRE

PARIS

## GRAMINAE - GAZELLE

0637-01



Featuring a simple and graphic pattern of frozen leaves, GRAMINAE is an all-over print with three contrasting shades. Especially soft and radiant, it is perfect for seating upholstery, curtains and wall coverings.

---

Collection	BOREALIS
------------	----------

---

Brand	LELIEVRE PARIS
-------	----------------

---

### TECHNICAL DATA

---

Composition	Viscose 52% - Cotton 42% - Polyamide 6%
-------------	--

---

Width	137 cm
-------	--------

---

Repeat cut	No
------------	----

---

Vertical repeat	54 cm
-----------------	-------

---

Horizontal repeat	68 cm
-------------------	-------

---

Drop match	No
------------	----

---

Care	   
------	---

---

Uses	   
------	---

---

Martindale test	30 000 T
-----------------	----------

---

Weight / Linear metre	550 g
--------------------------	-------

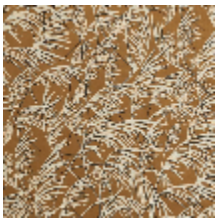
---

# LELIEVRE

PARIS



## Available colours



0637-01  
**GRAMINAE -  
GAZELLE**



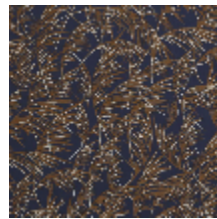
0637-02  
**GRAMINAE - GRIS**



0637-03  
**GRAMINAE -  
BLANC**



0637-04  
**GRAMINAE -  
CELADON**



0637-05  
**GRAMINAE -  
MARINE**

**GRAMINAE - GAZELLE**

0637-01

