

# LELIEVRE

PARIS

## TAÏGA - CÈDRE

0638-16



This gorgeous broadcloth is a first for Lelièvre Paris. A chic and timeless essential, it comes in a very broad palette of 23 colourways. From old greys, a number of earth tones, classic and elegant chocolate and camel tones, to indigo blue and a deeper aubergine shade... The whole range is suitable for seating upholstery and curtains and is easily paired with all other fabrics from the BOREALIS collection.

---

Collection	BOREALIS
------------	----------

---

Brand	LELIÈVRE
-------	----------

---

### TECHNICAL DATA

---

Composition	Wool 80% - Polyamide 20%
-------------	--------------------------

---

Width	154 cm
-------	--------

---

Repeat cut	No
------------	----

---

Drop match	No
------------	----

---

Care	   
------	---

---

Uses	  
------	---

---

Martindale test	100 000 T
-----------------	-----------

---

Weight / Linear metre	420 g
-----------------------	-------

---

Fire rating	EN1021-1&2
-------------	------------

---

# LELIEVRE

PARIS



# LELIEVRE

PARIS

## Available colours



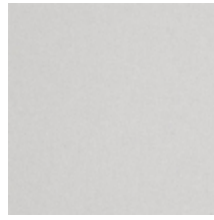
0638-01  
**TAÏGA - NATUREL**



0638-02  
**TAÏGA - ECRU**



0638-03  
**TAÏGA - NEIGE**



0638-04  
**TAÏGA - PERLE**



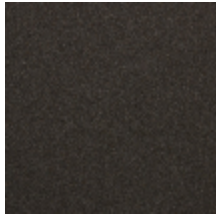
0638-05  
**TAÏGA - BRUME**



0638-06  
**TAÏGA -  
CHARTREUX**



0638-07  
**TAÏGA - FUSAIN**



0638-08  
**TAÏGA - VISON**



0638-09  
**TAÏGA - OURS**



0638-10  
**TAÏGA -  
CHAMOIS**



0638-11  
**TAÏGA - CAMEL**



0638-12  
**TAÏGA - BLÉ**



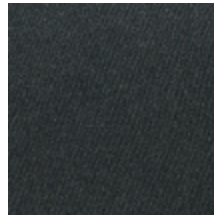
0638-13  
**TAÏGA - ANIS**



0638-14  
**TAÏGA - FORÊT**



0638-15  
**TAÏGA - KAKI**



0638-16  
**TAÏGA - CÈDRE**



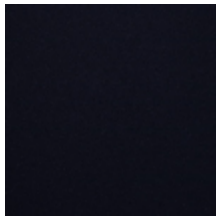
0638-17  
**TAÏGA - SAUGE**



0638-18  
**TAÏGA - AZUR**



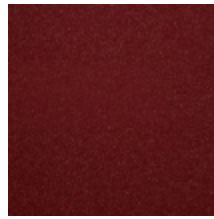
0638-19  
**TAÏGA - DENIM**



0638-20  
**TAÏGA - MARINE**



0638-21  
**TAÏGA -  
AUBERGINE**



0638-22  
**TAÏGA - PIMENT**



0638-23  
**TAÏGA - SAFRAN**

**TAÏGA - CÈDRE**

0638-16

