

LELIEVRE

PARIS

ONDULATION - GREGE

6458-01



This wall covering made in France is a reinterpretation of BALTIC, a fabric from the BOREALIS collection evoking an undulating landscape. The boucle weave is accented with a contrasting yarn creating a pattern and play of light.

Collection THE WALL.3ÈME CHAPITRE

Brand LELIÈVRE PARIS

TECHNICAL DATA

Composition Cotton 64% - Polyester 36%

Width 136 cm

Repeat cut No

Vertical repeat 82 cm

Horizontal repeat 140 cm

Uses 

Weight / Linear metre 405 g

LELIEVRE

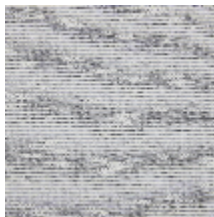
PARIS



Available colours



6458-01
**ONDULATION -
GREGE**



6458-02
**ONDULATION -
GLACIER**



6458-03
**ONDULATION -
FUMÉE**

ONDULATION - GREGE

6458-01

