

# LELIEVRE

PARIS

## ONDULATION - FUMÉE

6458-03



This wall covering made in France is a reinterpretation of BALTIC, a fabric from the BOREALIS collection evoking an undulating landscape. The boucle weave is accented with a contrasting yarn creating a pattern and play of light.

---

Collection	THE WALL.3ÈME CHAPITRE
------------	------------------------

---

Brand	LELIEVRE
-------	----------

---

### TECHNICAL DATA

---

Composition	Cotton 64% - Polyester 36%
-------------	----------------------------

---

Width	136 cm
-------	--------

---

Repeat cut	No
------------	----

---

Vertical repeat	82 cm
-----------------	-------

---

Horizontal repeat	140 cm
-------------------	--------

---

Uses	
------	---

---

Weight / Linear metre	405 g
-----------------------	-------

---

[lelievrepairs.com](http://lelievrepairs.com)

[contact@lelievrepairs.com](mailto:contact@lelievrepairs.com)



# LELIEVRE

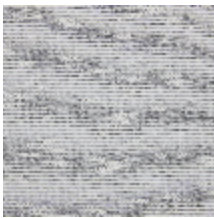
PARIS



## Available colours



6458-01  
**ONDULATION -  
GREGE**



6458-02  
**ONDULATION -  
GLACIER**



6458-03  
**ONDULATION -  
FUMÉE**



**ONDULATION - FUMÉE**

6458-03

