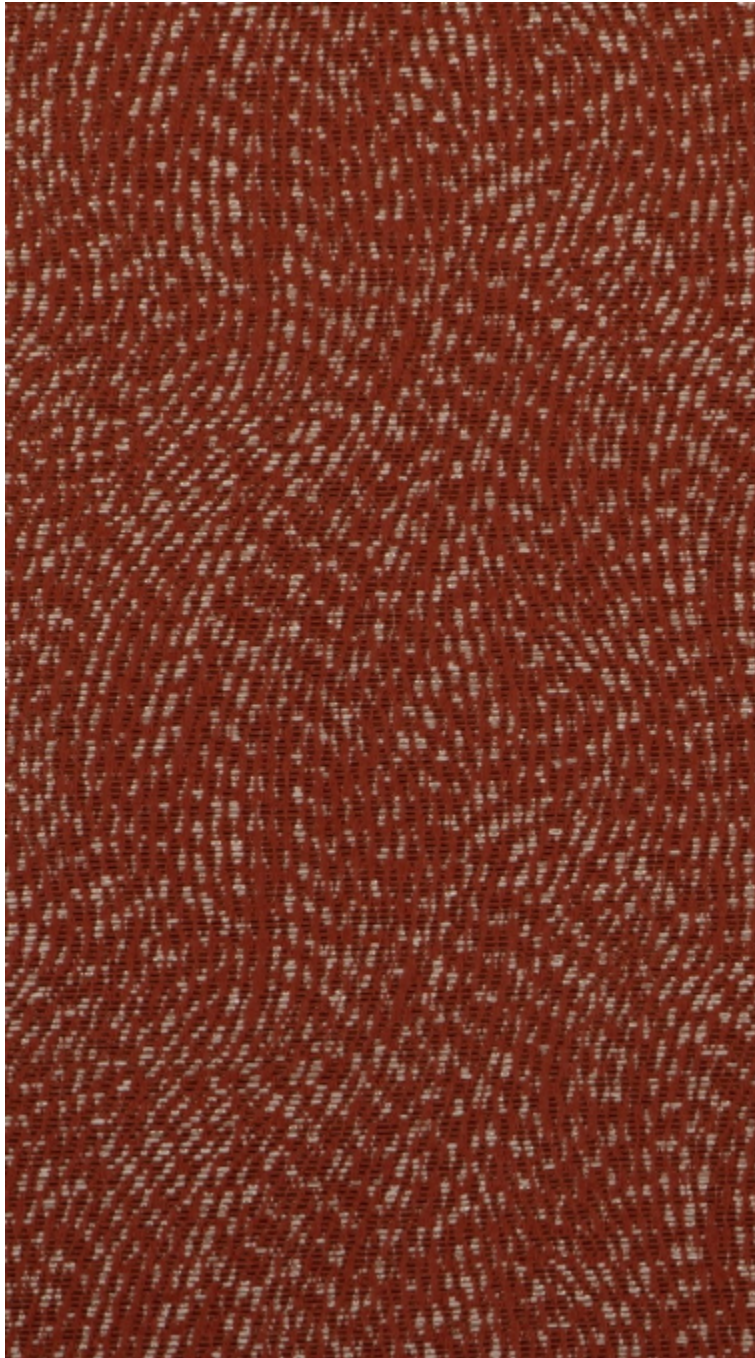


## KYRIELLE - TERRACOTTA

0652-06



Made in the Lelièvre factory, this semi-plain jacquard impresses with its technique using a slightly iridescent thread - golden, copper or dusty - for a sparkling rendering giving the impression of a soft rain.

Collection	L'ENVOLÉE FANTASTIQUE
------------	-----------------------

Brand	LELIEVRE
-------	----------

## TECHNICAL DATA

Composition	Cotton 56% - Polyester 26% - Polyamide 9% - PC 9%
-------------	--

Width	142 cm
-------	--------

Repeat cut	No
------------	----

Vertical repeat	16 cm
-----------------	-------

Horizontal repeat	18 cm
-------------------	-------

Drop match	No
------------	----

Care	   
------	---

Uses	   
------	---

Martindale test	40 000 T
-----------------	----------

Weight / Linear metre	585 g
-----------------------	-------



LELIEVRE

PARIS





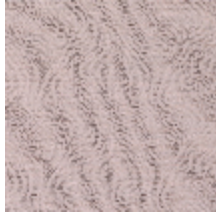
# LELIEVRE

PARIS

## Available colours



0652-01  
**KYRIELLE -  
ECUME**



0652-02  
**KYRIELLE -  
POUDRE**



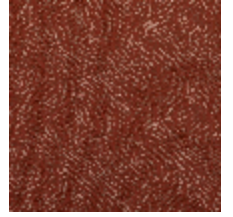
0652-03  
**KYRIELLE - DORE**



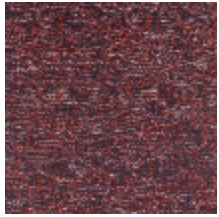
0652-04  
**KYRIELLE - MIEL**



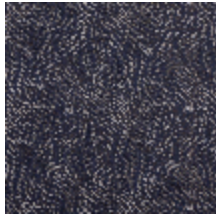
0652-05  
**KYRIELLE -  
AMBRE**



0652-06  
**KYRIELLE -  
TERRACOTTA**



0652-07  
**KYRIELLE - FIGUE**



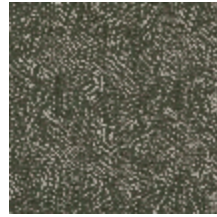
0652-08  
**KYRIELLE -  
INDIGO**



0652-09  
**KYRIELLE -  
GRAPHITE**



0652-10  
**KYRIELLE - JADE**



0652-11  
**KYRIELLE - CEDRE**



**KYRIELLE - TERRACOTTA**

0652-06

