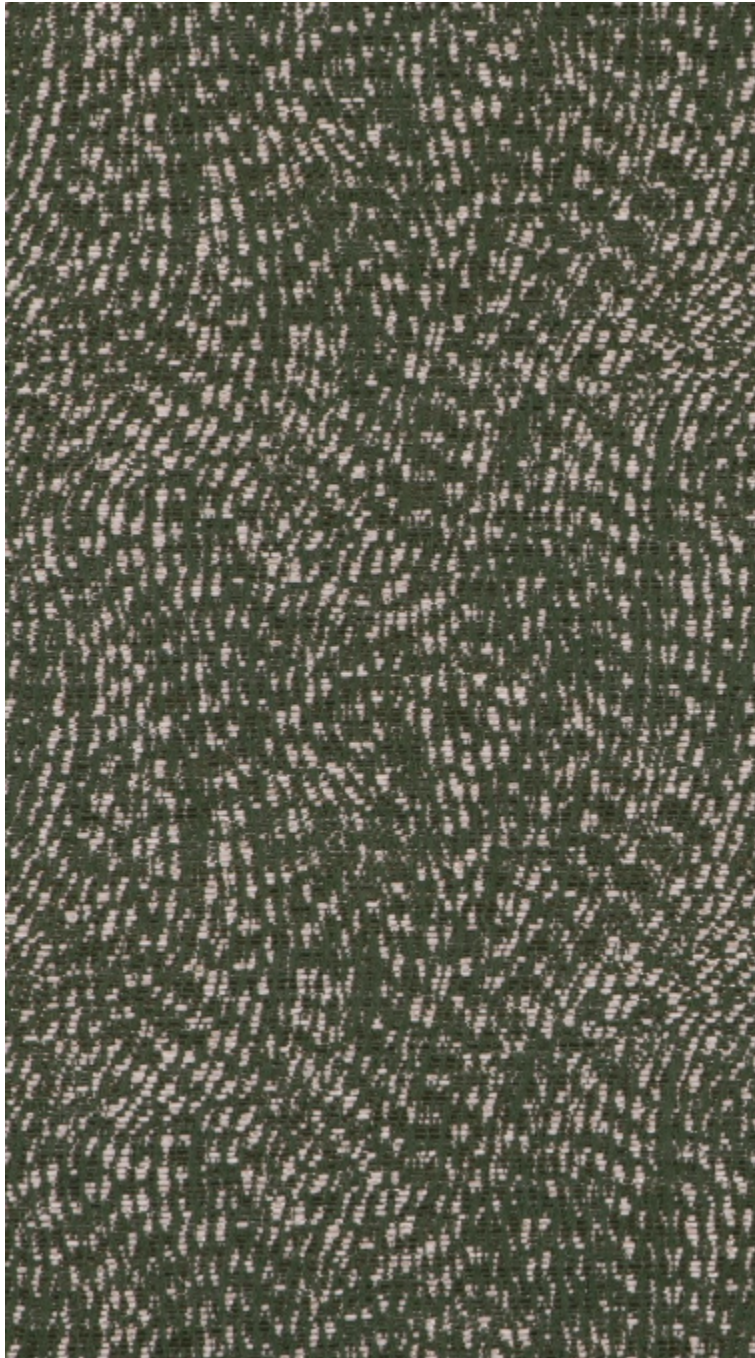


# LELIEVRE

PARIS

## KYRIELLE - CEDRE

0652-11



Made in the Lelièvre factory, this semi-plain jacquard impresses with its technique using a slightly iridescent thread - golden, copper or dusty - for a sparkling rendering giving the impression of a soft rain.

---

Collection	L'ENVOLÉE FANTASTIQUE
------------	-----------------------

---

Brand	LELIEVRE
-------	----------

---

### TECHNICAL DATA

---

Composition	Cotton 56% - Polyester 26% - Polyamide 9% - PC 9%
-------------	--

---

Width	142 cm
-------	--------

---

Repeat cut	No
------------	----

---

Vertical repeat	16 cm
-----------------	-------

---

Horizontal repeat	18 cm
-------------------	-------

---

Drop match	No
------------	----

---

Care	   
------	---

---

Uses	   
------	---

---

Martindale test	40 000 T
-----------------	----------

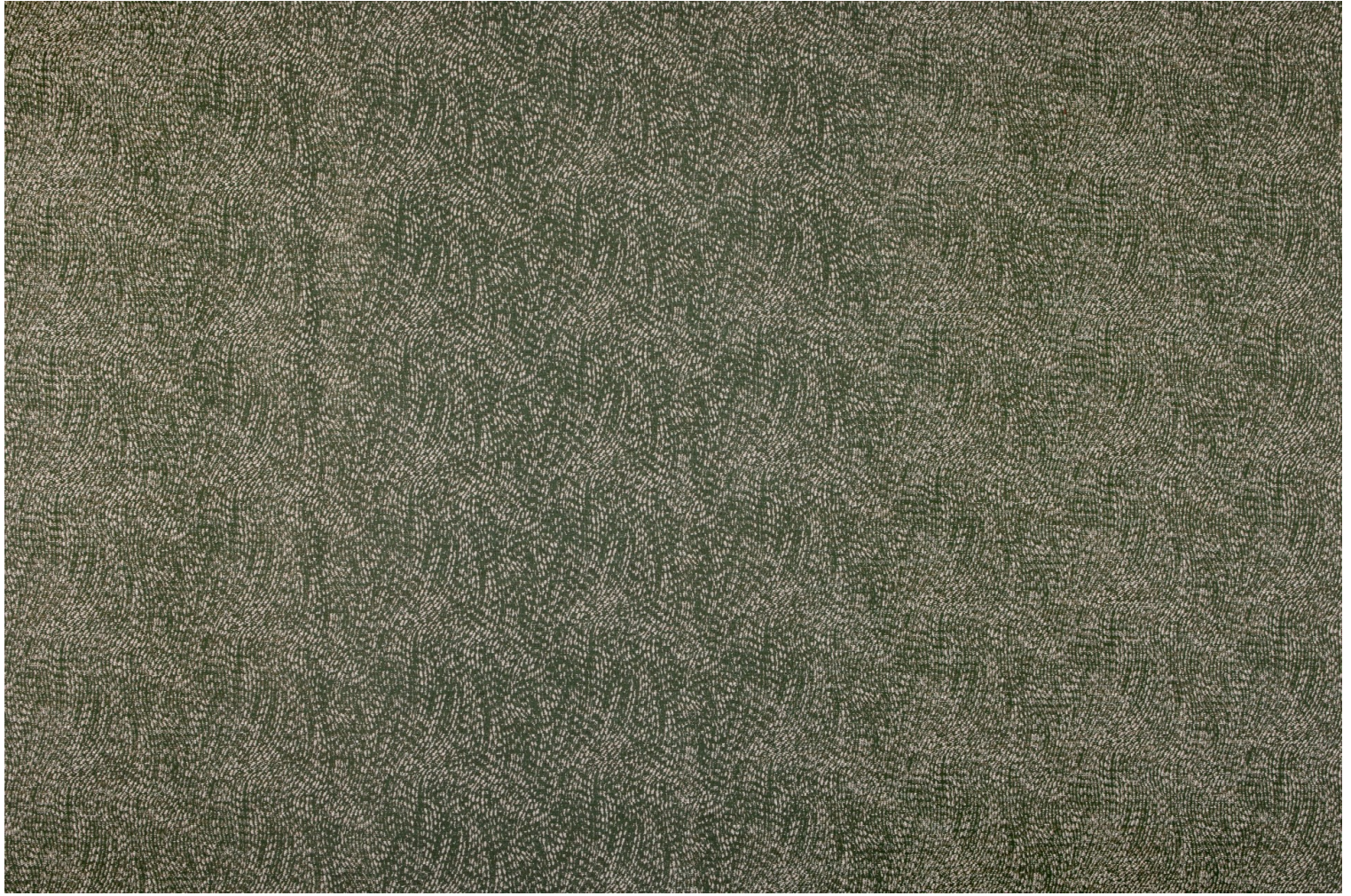
---

Weight / Linear metre	585 g
-----------------------	-------

---

# LELIEVRE

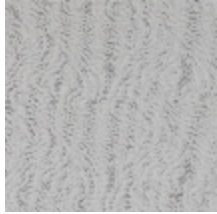
PARIS



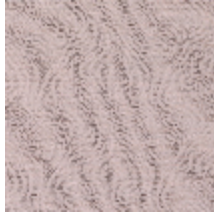
# LELIEVRE

PARIS

## Available colours



0652-01  
**KYRIELLE -  
ECUME**



0652-02  
**KYRIELLE -  
POUDRE**



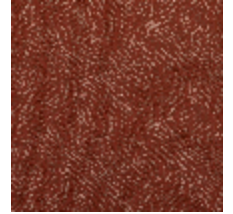
0652-03  
**KYRIELLE - DORE**



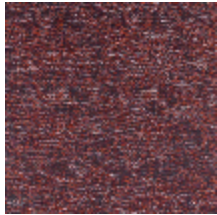
0652-04  
**KYRIELLE - MIEL**



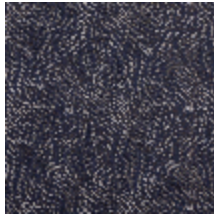
0652-05  
**KYRIELLE -  
AMBRE**



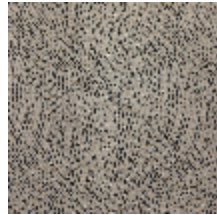
0652-06  
**KYRIELLE -  
TERRACOTTA**



0652-07  
**KYRIELLE - FIGUE**



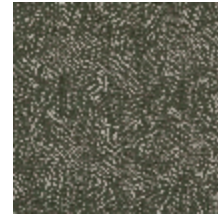
0652-08  
**KYRIELLE -  
INDIGO**



0652-09  
**KYRIELLE -  
GRAPHITE**



0652-10  
**KYRIELLE - JADE**



0652-11  
**KYRIELLE - CEDRE**

# LELIEVRE

PARIS

## KYRIELLE - CEDRE

0652-11

