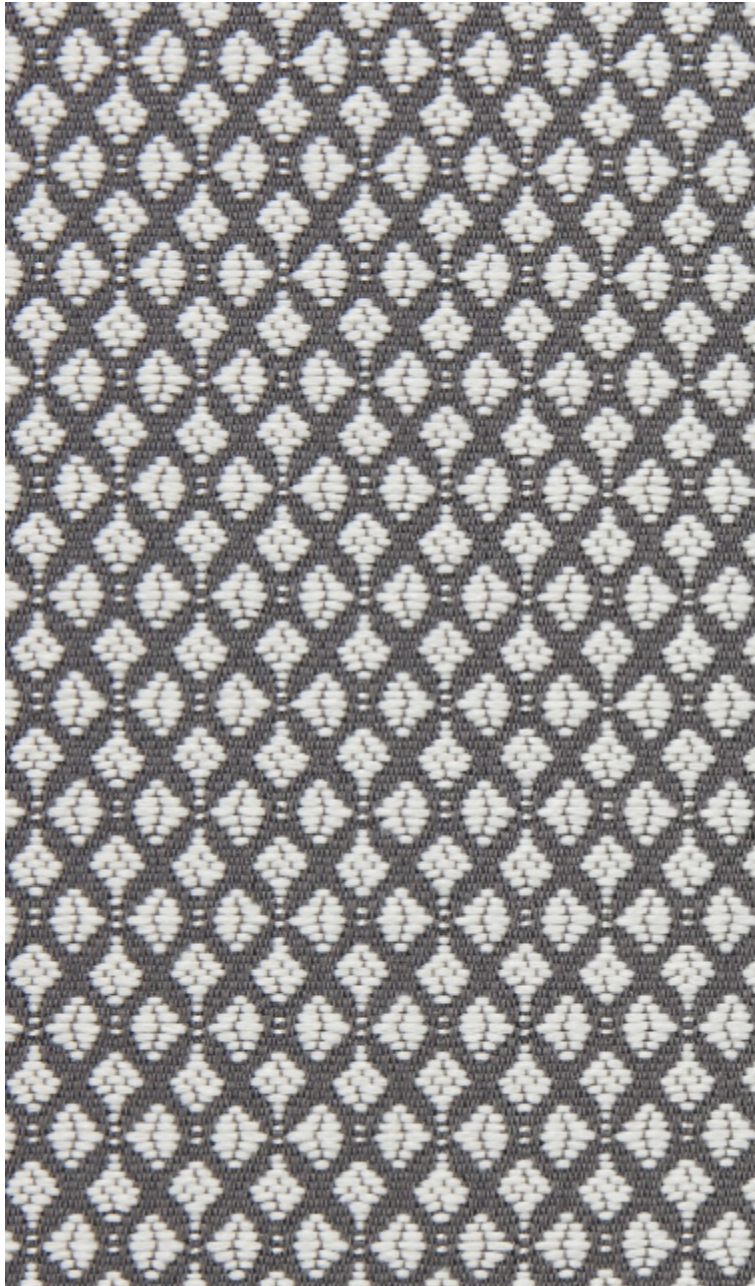


LELIEVRE

PARIS

CLUB M1 - ROUAN

0797-05



Club is a two-tone fabric with a small pattern inspired by a gentlemen's cloakroom with an equestrian feel. The clean, dry weft is reminiscent of woven horsehair, and the untreated look is accentuated by a range of natural colours. Use for hardwearing seating, accessories and curtains.

Collection **COLLECTION 23**

Brand **LELIEVRE CONTRACT**

TECHNICAL DATA

Composition **Polyester FR 100%**

Width **140 cm**

Repeat cut **No**

Drop match **No**

Care 

Uses 

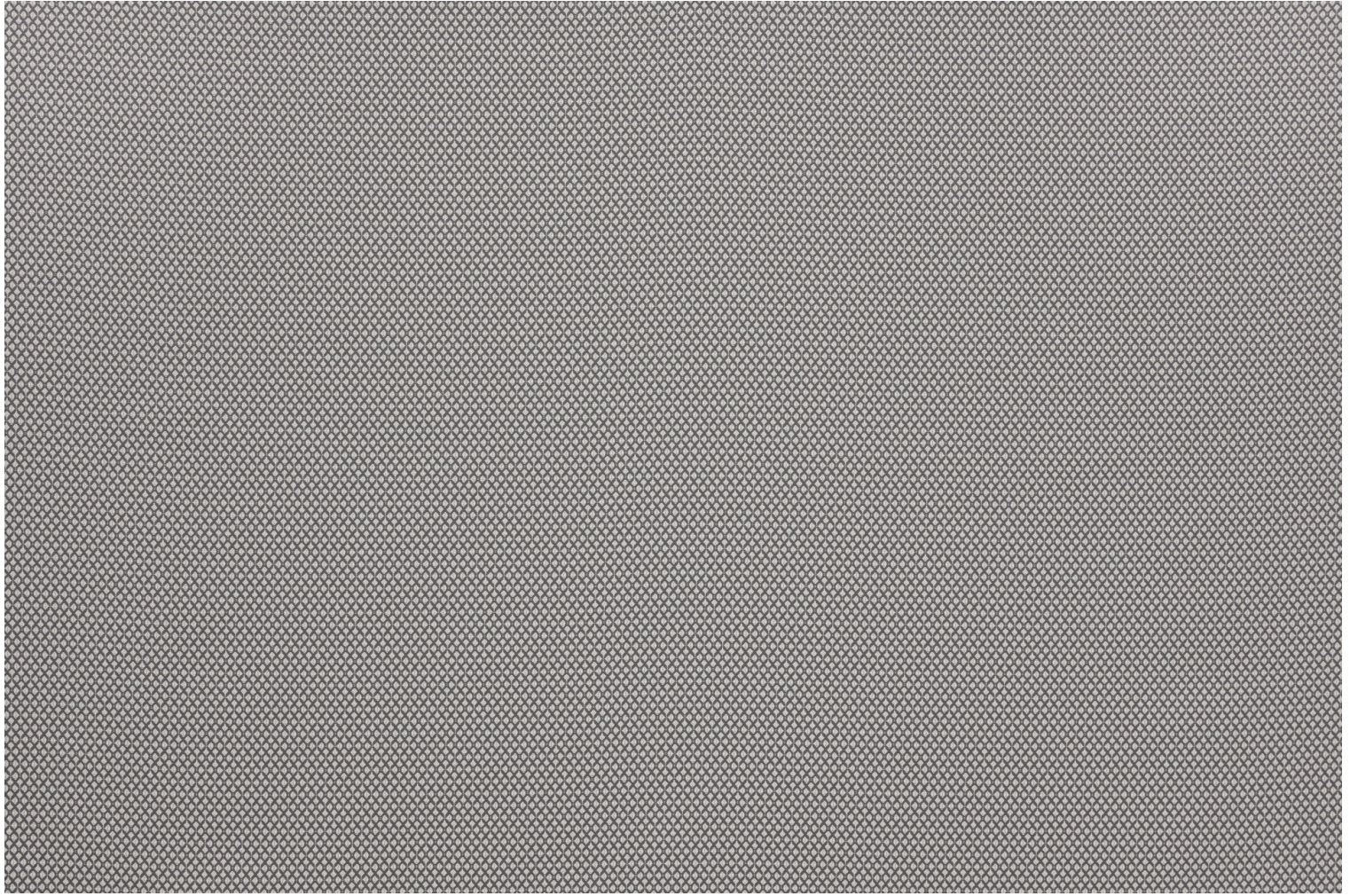
Martindale test **60 000 T**

Weight / Linear metre **570 g**

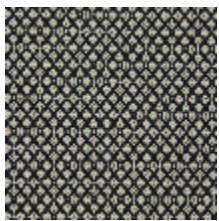
Fire rating **M1**

LELIEVRE

PARIS



Available colours



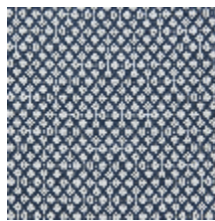
0797-01
**CLUB M1 -
PANGARÉ**



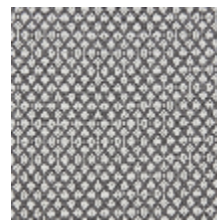
0797-02
**CLUB M1 -
ALEZAN**



0797-03
CLUB M1 - BAI



0797-04
**CLUB M1 -
MARINE**



0797-05
CLUB M1 - ROUAN



0797-06
**CLUB M1 -
CREMELLO**

CLUB MI - ROUAN

0797-05

