

Lelievre presents the ÉVASIONS  
Collection for 2017

An inspiring collection, based on the world and landscapes ...  
of yesterday and today.



A sensory and cultural mix. Fabrics enhanced by a diversity of graphics, textures, animals and vegetation, wilderness, folklore ... A work of contrasts, delicious paradoxes, found in the shadows that play with light, in neutrals and colors, the taming of the wild... An inspiration which has travelled between crafts, traditional ethnic decorations and their craftsmanship... Basketry, braiding, rope making, jewellery, ornaments, embroidery, tapestry, belts, fringes.

Evasions is the new collection Lelievre collection. A ballad on endless trails, a sensory escapade and a vision of decorations these fabrics will influence... including bohemian, utopian, contemporary and timeless classics.

TROPICAL

567



Tropical is the iconic motif for this season. A naive design, specially created for the collection, is expressed in spectacular weaving following a tapestry technique. The deep blue harmony of the background, like a dreamy underwater scene highlights the colors and graphics of each pattern like paper cut-outs.

LAMA

565



An impulse. Nature in the raw, without compromise but a certain elegance and softness of touch.

VACOA

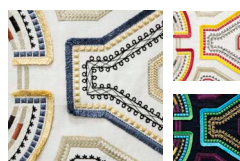
568



Woven leaves of the Vacoa shrub expressed in the art of basketry on the Ile de la Reunion... An enchanting motif with ribbons and sculpted lines in relief.

KAYAPO

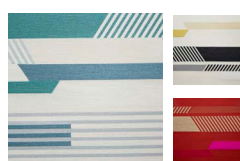
561



The structure of the design is inspired by mirrored symmetry of French garden plans, while the embroidery borrows the ethnic codes of the Kapayo tribes originating in the Amazonian forest

GAUCHO

563



Rhythmic and dynamic, this graphic stripe is enlivened by weft threads on a luminous background of matt satin. Like a Moroccan carpet leaving the floor and flying to the window...

TAMIS

1364



One can imagine Paris with its iridescent monuments, the lights, the night. Here the Philharmonie, there the Concorde : a subdued light with metallic reflections that inspired this light sheer fabric.

BALI

562



A pattern of stylised flowers and branches, vibrating on the jacquard surface of Bali. The spectacle is delicately infused, created by the interweaving of the threads visible in the design

LANDE

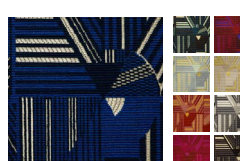
564



Lande is a small plain with a natural look and feel. The mixed weft threads are discretely attached by the weave in a fine structure with superimposed lozenges.

KASAI

566



Kasai is a contemporary interpretation of the graphic Kuba Kasai textiles, these hand-woven fabrics following a technique mastered over four centuries are constantly re-interpreted by artists. The result is a nod to Art Deco marquetry which is a constant reminder that the marriage of cultures offers sublime opportunities.

About Lelievre, editing and creating fabrics since 1914:

Contemporary and original designs.... Lelievre edits and creates exclusive top of the range international collections of decorating fabrics with coordinating accessories. Designs are inspired by an eclectic and daring universe of travel, fashion, art, original materials and natural effects.

The Tassinari & Chatel brand is a trademark of Lelievre. Jean Paul Gaultier for Lelievre and Sonia Rykiel Maison are licenses distributed exclusively by Lelievre