

BIG TIE BY WILMOTTE



Press Kit
2023

LELIEVRE
PARIS



BIG TIE

BY WILMOTTE



Passionate about material, craftsmanship and handwork, Jean-Michel Wilmotte hoped that though collaborating with Maison Lelievre, he would reconnect with the traditional art of French weaving.

Created in search of harmony and elegance, the Big Tie contract collection by Wilmotte reinterprets the classic Jacquard patterns featured on woven ties, by oversizing them to take them to another level. Jean-Michel Wilmotte's aim was to magnify the quality of the fabric through a new contemporary look.

To create this collection, Jean-Michel Wilmotte was inspired by the weaves of the looms, the geometry of the patterns and the colourful harmony of the Aplat in the Wilmotte range. The Big Tie contract collection by Wilmotte is available in five chromatic options: les Encres, les Fusains, les Craies, les Graphites, les Krafts. The graphic language of the collection features complementary motifs that allow the fabric to enter the space with finesse and refinement and to compliment the surrounding material.

This collection, in which bindings, armour, colours, contrasts and textures are highlighted, shows an admiration and respect for traditional French production.





Les Encres

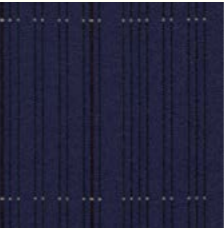
3266



01 - BIG LOSANGE



02 - LOSANGE



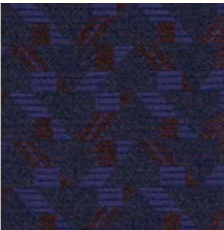
03 - LIGNE



04 - CARRÉ



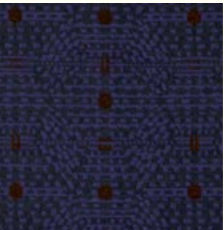
05 - AXIS



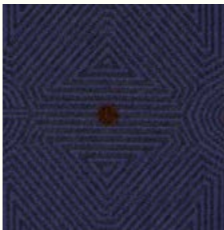
06 - DELTA



07 - RECTANGLE



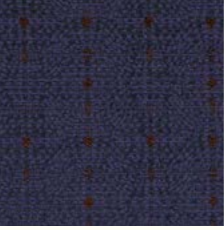
08 - BIG DEDALE



09 - BIG ESQUISSE












10 - DEDALE



11 - ESQUISSE

TECHNICAL INFORMATION

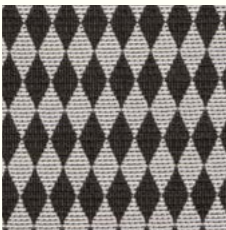
Width	140 cm
Height	530 gr/ml
Martindale	40 000
Horizontal pattern	
Vertical pattern	
Composition	100% Polyester FR
Uses	   
Cleaning	    

Les Fusains

3267



01 - BIG LOSANGE



02 - LOSANGES



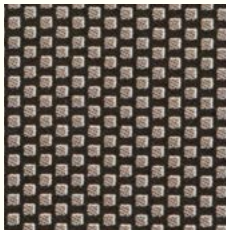
03 - LIGNE



04 - LIGNE PRUSSE



05 - CARRÉ PRUSSE



06 - CARRÉ



07 - AXIS



08 - DELTA



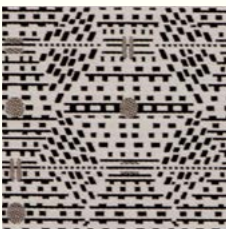
09 - RECTANGLE



10 - BIG DEDALE



11 - BIG ESQUISSE NOIR



12 - BIG ESQUISSE BLANC



13 - DEDALE



14 - ESQUISSE NOIR



14 - ESQUISSE BLANC

TECHNICAL INFORMATION

Width	140 cm
Height	530 gr/ml
Martindale	40 000
Horizontal pattern	
Vertical pattern	
Composition	100% Polyester FR
Uses	   
Cleaning	    





Les Craies

3268



01 - BIG LOSANGE



02 - LOSANGE



03 - CARRÉ



04 - AXIS



05 - DELTA



06 - RECTANGLE



07 - BIG DEDALE



08 - BIG ESQUISSE



09 - DEDALE

TECHNICAL INFORMATION

Width	140 cm
Height	530 gr/ml
Martindale	40 000
Horizontal pattern	
Vertical pattern	
Composition	100% Polyester FR
Uses	   
Cleaning	    

Les Graphites

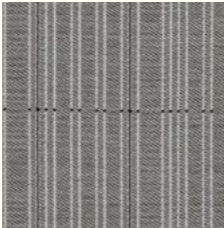
3269



01 - BIG LOSANGE



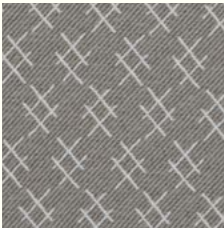
02 - LOSANGE



03 - LIGNE



04 - CARRÉ



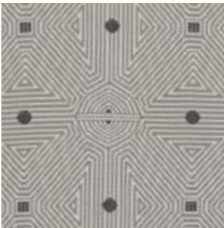
05 - AXIS



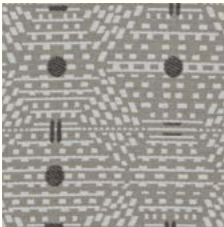
06 - DELTA



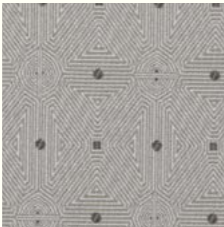
07 - RECTANGLE



08 - BIG DEDALE



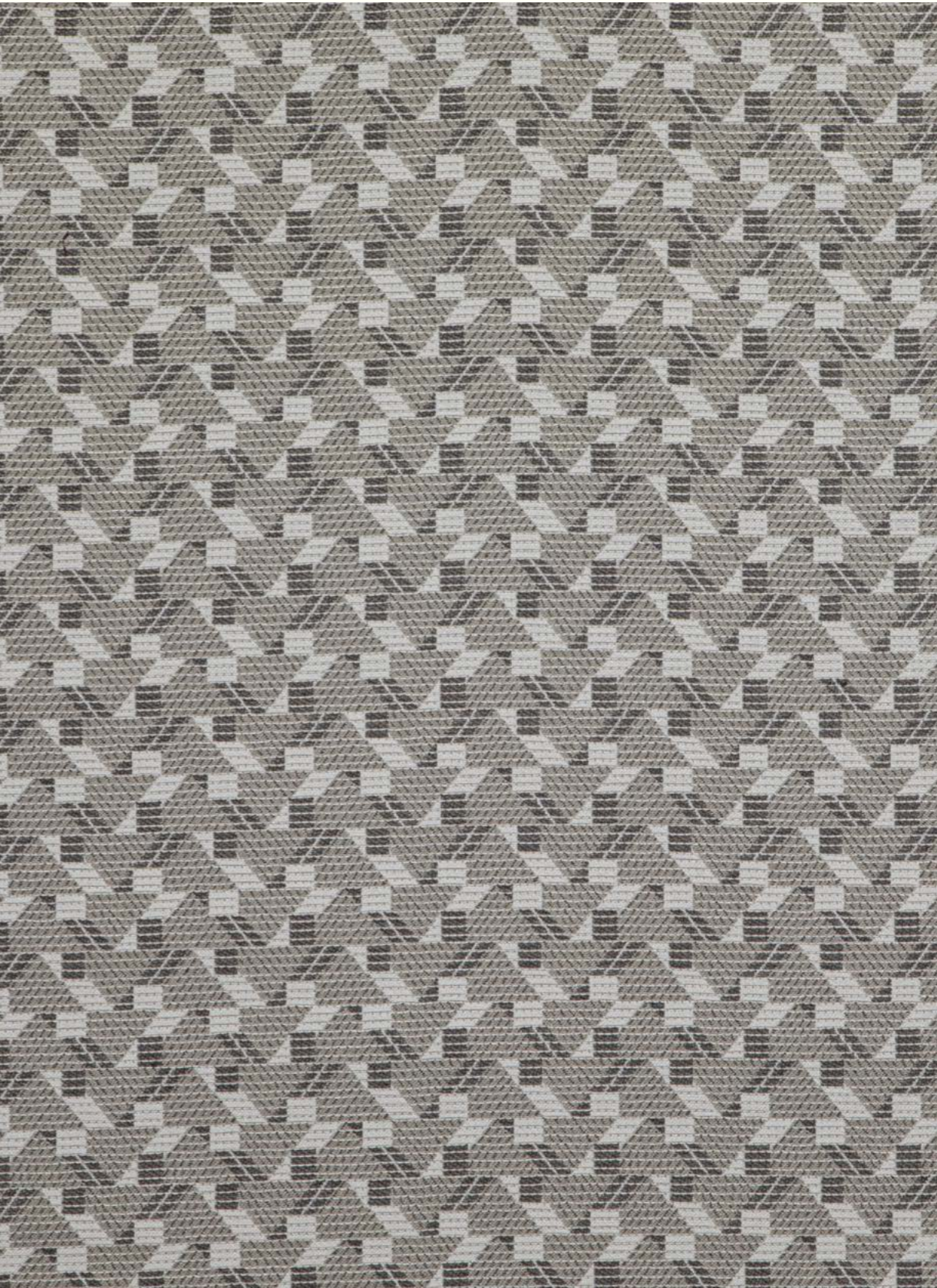
09 - BIG ESQUISSE



10 - DEDALE

TECHNICAL INFORMATION

Width	140 cm
Height	530 gr/ml
Martindale	40 000
Horizontal pattern	
Vertical pattern	
Composition	100% Polyester FR
Uses	   
Cleaning	    





Les Krafts

3270



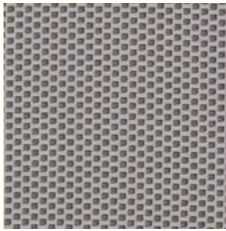
01 - BIG LOSANGE



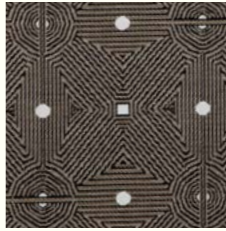
02 - LOSANGE



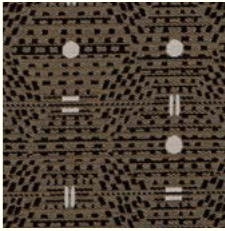
03 - LIGNE



04 - CARRÉ










05 - BIG DELTA



06 - BIG ESQUISSE

TECHNICAL INFORMATION

Width	140 cm
Height	530 gr/ml
Martindale	40 000
Horizontal pattern	
Vertical pattern	
Composition	100% Polyester FR
Uses	   
Cleaning	    

TISSUS / FABRICS

Informations techniques / technical informations

		LARGEUR WIDTH		RACCORD PATTERN VERTICAL		RACCORD PATTERN HORIZONTAL		TYPE DE RACCORD MATCH						
RÉF/NOM REF/NAME	COL.	CM	INCH	CM	INCH	CM	INCH	DROIT/ SAUTE	POIDS WEIGHT (GR/ML)	COMPOSITION	ENTRETIEN CLEANING	USAGE RECOMMENDED USE	MARTINDALE TEST	NON-FEU FIRE CERTIFICATION
3266 - LES ENCREs	11	140	55,11					DROIT	530	100% PES FR			40 000	M1
3267 - LES FUSAINS	15													
3268 - LES CRAIES	9													
3269 - LES GRAPHITES	10													
3270 - LES KRAFTS	6													
324 - NABAB	11	140	55,12						840	100% Polyester TREVIRA CS			80 000	M1 - IMO PART 7&8
638 - TAÏGA	8	154	60,63						420	80% Laine 20% Polyamide			100 000	EN1021-1-2
806 - RIGA	9	141	55,51						800	100% Polyester TREVIRA CS			90 000	M1

CODE	FRANÇAIS	ENGLISH
CO	COTON	COTTON
LI	LIN	LINEN
PA	POLYAMIDE	NYLON
PE	POLYESTER	POLYESTER



Siège à usage décoratif
Decorative use upholstery



Siège à usage régulier
General domestic upholstery



Siège à usage intensif
heavy domestic upholstery



Rideaux
Curtains



Accessoires de décoration
Home accessories



Tenture murale
Wall hanging



Lavage à 30°C
Washing not above 30°C



Chlorage interdit
Do not bleach



Ne pas sécher à la machine
Do not dry in drum



Repassage à faible temp. (110°C)
Ironing low temp.



Repassage à moyenne temp. (110°C)
Ironing medium temp.



Perchloéthylène avec précaution
Moderate cleaning with perchlorethylene

About

Jean-Michel Wilmotte

Architect, city planner and designer, Jean-Michel Wilmotte is member of the Académie des Beaux-Arts since 2015. Born in 1948, he graduated from the Ecole Camondo (Paris) in interior architecture.

15

In 1975, he founded Wilmotte & Associés, an architectural firm which, with its design studio Wilmotte & Industries, now brings together 260 architects, urban planners, designers, museographers and interior architects of 27 different nationalities in France, the United Kingdom, Italy, Senegal and South Korea.

From Dallas to Seoul, via Moscow, Dakar and São Paulo, Jean-Michel Wilmotte and his teams have been criss-crossing the world for more than 45 years and, everywhere, place people, their cultures and their stories at the heart of their designs.

Whatever the project, from the simplest to the most spectacular, they develop an approach that is both innovative and responsible, with particular attention to materials, light, finishes and plants, always respecting the site and its history.

Jean-Michel Wilmotte is particularly fond of designing cultural and museum spaces, as well as heritage rehabilitation and conversion projects.

But throughout his career, he has developed and extended his agency's activities and know-how to include very large-scale projects, such as Greater Moscow.

Today, the Wilmotte firm operates in both the public and private sectors, across luxury, hospitality, residential, and the service industries.

LELIEVRE

PARIS

Entering Maison Lelièvre is to enter the temple of interior design, at the heart of French heritage, to experience the essence of the French "Art de Vivre" at your fingertips.

Founded by Henri Lelièvre in Paris in 1914, the eponymous Maison built its reputation with its velvets signature. Over the years, due to Lelièvre's passion for colours, materials, and its taste for beauty, Maison Lelièvre has become, for more than a century, one of the major actors in interior design.

Lelièvre's expertise, its craftsmanship, its heritage, and its unique "know-how" is a subtle balance between tradition and modernity. Maison Lelièvre has developed its reputation internationally with the ambition to create significant interaction between Lelièvre and its clients, through its showrooms in Paris, London, Dubai, Düsseldorf and Milan.

16

BIG TIE

BY WILMOTTE



Catherine Alfillé
+ 44 (0) 7799 535 556
catherinealfille@14septembre.com

LELIEVRE
P A R I S

Marie de Cheffontaines
+33 (0)1 43 16 88 07
mdechfontaines@lelievreparis.com

W&A WILMOTTE & ASSOCIÉS ARCHITECTES

Victoire Liagre
+33 (0)1 53 02 24 36
victoire.liagre@wilmotte.fr