



Tassinari & Chatel

Manufacture de Soieries à Lyon

fondée en 1680

X

DIOR

PRESS RELEASE



A unique artisanal dialogue

For the Dior Spring-Summer 2023 ready-to-wear collection, Maria Grazia Chiuri collaborated with Tassinari & Chatel, a jewel of French heritage with expertise that spans centuries, with two enchanting designs.

The Artistic Director of Dior's women's lines explored the precious archives and selected two designs entitled « Semé de fleurs » and « Oiseau de Paradis » which embody a fascination with nature, one of the inspirations of the show. These artisanal works, emblematic of trends in the 19th century, were originally commissioned from the great decorator Mr Despréaux de Saint-Sauveur, who worked for Emperor Napoleon III.

Tassinari & Chatel is the jewel of Maison Lelièvre Paris, and one of the jewels of the French heritage. This weaving and silk factory, one of Lyon's oldest institutions and the cradle of exceptional French craftsmanship, has been a benchmark of excellence in its field since it was founded in 1680 with the Pernon workshop.

Combining boldness and inventiveness, this family business has constantly evolved while multiplying its collaborations with renowned artists and designers throughout the ages. It has thus seduced the most influential personalities in history, becoming the official supplier to the greatest courts of Europe - such as that of King Louis XV - and Napoleon I, signing sublime creations for Louis XVI and Marie-Antoinette in the palaces of Versailles, Compiègne and Saint Cloud.

In 1806, it was at Tassinari et Chatel that Joseph Marie Jacquard developed the weaving machine to which he gave his name. Two hundred years later, in 2006, it was one of the first companies to obtain the precious EPV (Entreprise du Patrimoine Vivant) label. For more than three centuries, Tassinari & Chatel has accumulated and preserved nearly one hundred thousand archives. An unrivalled heritage that celebrates more than ever the virtuosity of the hand-made and the beauty of the fabric that the House of Dior holds dear.



Tassinari & Chatel

Manufacture de Soieries à Lyon

fondée en 1680

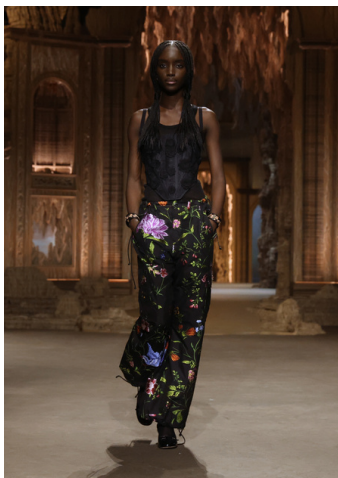
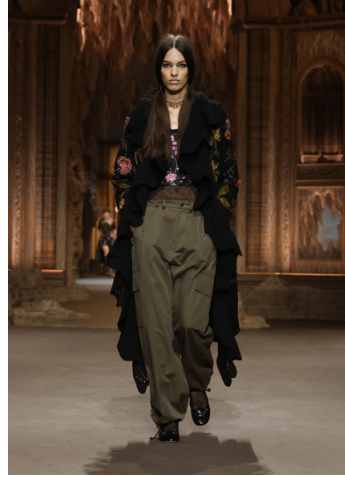


Photo credits: Dior & Sophie Carre



Tassinari & Chatel

Manufacture de Soieries à Lyon

fondée en 1680

Our Tassinari & Chatel archives

"Semé de fleurs"

This fabric is recorded in the archives of the House of Tassinari & Chatel under the pattern number 2047 and is described in the Grand Frères design book as follows: "Gros de Tours brocaded, on 1080 cords, Indian design copied on an original fabric by Mrs Imbert and Bergerat for Mr Despréaux de St Sauveur in January 1861 - Chez Sear". These light and delicate flowery patterns depict nature in a new light. This document was commissioned by the decorator Mr Despréaux de Saint Sauveur.

"Oiseau de paradis"

This fabric is recorded in the archives of Tassinari & Chatel under the pattern number 2106, and is described in the Grand Frères design book as follows: "Lampas brocaded on 1000 cords, reduction 8 in 10, Japanese design, composed for us and put on card by Mr L. Roux in October 1864 - Chez Sear". This drawing is the result of Japonisme, an artistic movement that developed in France between 1860 and 1890. In our commission books, this paperback was ordered several times by Mr Despréaux de Saint Sauveur from foreign commission.



Photo credits: Dior & Sophie Carre



Tassinari & Chatel

Manufacture de Soieries à Lyon

fondée en 1680

Press Contacts

LELIEVRE

PARIS

Marie de Cheffontaines | 01 43 16 88 07
mdecheffontaines@lelievrepairs.com
www.lielievrepairs.com



Catherine Alfillé | + 44 (0) 7799 535 556
catherinealfillé@14septembre.com



www.lielievrepairs.com